

bs-2754R**[Primary Antibody]****Bioss**
ANTIBODIES

www.bioss.com.cn

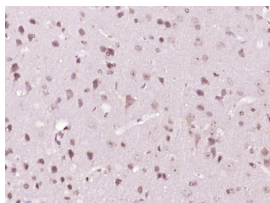
sales@bioss.com.cn

techsupport@bioss.com.cn

400-901-9800

Afadin Rabbit pAb**— DATASHEET —**

Host: Rabbit	Isotype: IgG	Applications: IHC-P (1:100-500) IHC-F (1:100-500) IF (1:100-500) Reactivity: Mouse (predicted: Human, Rat, Pig, Cow, Dog, Horse) Predicted MW.: 207 kDa Subcellular Location: Cell membrane
Clonality: Polyclonal		
GeneID: 4301	SWISS: P55196	
Target: Afadin		
Immunogen: KLH conjugated synthetic peptide derived from human Afadin: 341-440/1824.		
Purification: affinity purified by Protein A		
Concentration: 1mg/ml		
Storage: 0.01M TBS (pH7.4) with 1% BSA, 0.02% Proclin300 and 50% Glycerol. Shipped at 4°C. Store at -20°C for one year. Avoid repeated freeze/thaw cycles.		
Background: Afadin is a cell-cell adherens junction F-actin binding multidomain protein. Two splice variants of afadin have been described: l-afadin, which is ubiquitously expressed, and the smaller s-afadin, which is abundantly expressed in neural tissue. l-Afadin contains one PDZ domain near its middle followed by three proline-rich and one F-actin-binding region at the carboxyl-terminal. l/s-Afadin is localized to cell-cell junctions and binds several cytoplasmic proteins such as the small GTPase Ras, the tight junction protein ZO-1, and the vinculin binding protein ponsin/SH3P12.		

— VALIDATION IMAGES —

Paraformaldehyde-fixed, paraffin embedded (mouse brain tissue); Antigen retrieval by boiling in sodium citrate buffer (pH6.0) for 15min; Block endogenous peroxidase by 3% hydrogen peroxide for 20 minutes; Blocking buffer (normal goat serum) at 37°C for 30min; Antibody incubation with (Afadin) Polyclonal Antibody, Unconjugated (bs-2754R) at 1:400 overnight at 4°C, followed by operating according to SP Kit(Rabbit) (sp-0023) instructions and DAB staining.