

bs-4757R**[Primary Antibody]**

Bioss
ANTIBODIES

www.bioss.com.cn

sales@bioss.com.cn

techsupport@bioss.com.cn

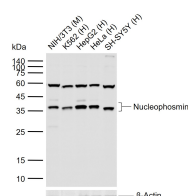
400-901-9800

Nucleophosmin Rabbit pAb

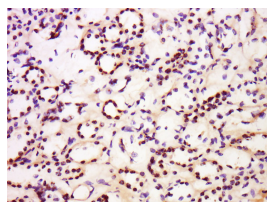
DATASHEET

Host: Rabbit	Isotype: IgG	Applications: WB (1:500-2000) IHC-P (1:100-500) IHC-F (1:100-500) IF (1:50-200) Reactivity: Human, Mouse (predicted: Rat, Rabbit, Pig, Cow, Dog, Horse) Predicted MW.: 33 kDa Subcellular Location: Nucleus
Clonality: Polyclonal		
GeneID: 4869	SWISS: P06748	
Target: Nucleophosmin		
Immunogen: KLH conjugated synthetic peptide derived from human Nucleophosmin: 21-120/259.		
Purification: affinity purified by Protein A		
Concentration: 1mg/ml		
Storage: 0.01M TBS (pH7.4) with 1% BSA, 0.02% Proclin300 and 50% Glycerol. Shipped at 4°C. Store at -20°C for one year. Avoid repeated freeze/thaw cycles.		
Background: This gene encodes a phosphoprotein which moves between the nucleus and the cytoplasm. The gene product is thought to be involved in several processes including regulation of the ARF/p53 pathway. A number of genes are fusion partners have been characterized, in particular the anaplastic lymphoma kinase gene on chromosome 2. Mutations in this gene are associated with acute myeloid leukemia. More than a dozen pseudogenes of this gene have been identified. Alternative splicing results in multiple transcript variants.[provided by RefSeq, Nov 2009].		

VALIDATION IMAGES



Sample: Lane 1: Mouse NIH/3T3 cell lysates Lane 2: Human K562 cell lysates Lane 3: Human HepG2 cell lysates Lane 4: Human HeLa cell lysates Lane 5: Human SH-SY5Y cell lysates
 Primary: Anti-Nucleophosmin (bs-4757R) at 1/1000 dilution Secondary: IRDye800CW Goat Anti-Rabbit IgG at 1/20000 dilution Predicted band size: 33 kDa Observed band size: 37 kDa



Tissue/cell: human kidney tissue; 4% Paraformaldehyde-fixed and paraffin-embedded; Antigen retrieval: citrate buffer (0.01M, pH 6.0), Boiling bathing for 15min; Block endogenous peroxidase by 3% Hydrogen peroxide for 30min; Blocking buffer (normal goat serum, C-0005) at 37°C for 20 min; Incubation: Anti-NPM1 Polyclonal Antibody, Unconjugated(bs-4757R) 1:200, overnight at 4°C, followed by conjugation to the secondary antibody(SP-0023) and DAB(C-0010) staining

SELECTED CITATIONS

- **[IF=2.58]** Jiang, Xiao-Hua, et al. "Effects of hepatitis C virus core protein and nonstructural protein 4B on the Wnt/β-catenin pathway." BMC microbiology 17.1 (2017): 124. WB ;="Human". 28545480