

bs-4107R**[Primary Antibody]****HLA-DPB1 Rabbit pAb****Bioss**
ANTIBODIES

www.bioss.com.cn

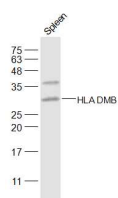
sales@bioss.com.cn

techsupport@bioss.com.cn

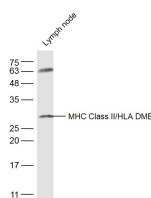
400-901-9800

DATASHEET**Host:** Rabbit**Isotype:** IgG**Clonality:** Polyclonal**GeneID:** 3115**SWISS:** P04440**Target:** HLA-DPB1**Immunogen:** KLH conjugated synthetic peptide derived from human HLA-DPB1: 101-210/258.**Purification:** affinity purified by Protein A**Concentration:** 1mg/ml**Storage:** 0.01M TBS (pH7.4) with 1% BSA, 0.02% Proclin300 and 50% Glycerol.

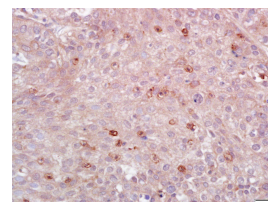
Shipped at 4°C. Store at -20°C for one year. Avoid repeated freeze/thaw cycles.

Background: HLA-DMB belongs to the HLA class II beta chain paralogues. This class II molecule is a heterodimer consisting of an alpha (DMA) and a beta (DMB) chain, both anchored in the membrane. It is located in intracellular vesicles. DM plays a central role in the peptide loading of MHC class II molecules by helping to release the CLIP (class II-associated invariant chain peptide) molecule from the peptide binding site. Class II molecules are expressed in antigen presenting cells (APC: B lymphocytes, dendritic cells, macrophages). The beta chain is approximately 26-28 kDa and its gene contains 6 exons. Exon one encodes the leader peptide, exons 2 and 3 encode the two extracellular domains, exon 4 encodes the transmembrane domain and exon 5 encodes the cytoplasmic tail. [provided by RefSeq, Jul 2008]**Applications:** WB (1:500-2000)**IHC-P** (1:100-500)**IHC-F** (1:100-500)**IF** (1:100-500)**Flow-Cyt** (0.2ug/test)**Reactivity:** Human, Mouse**Predicted MW.:** 29 kDa**Subcellular Location:** Cell membrane ,Cytoplasm**VALIDATION IMAGES**

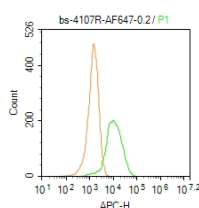
Sample: Spleen (Mouse) Lysate at 40 ug Primary: Anti-HLA DMB (bs-4107R) at 1/500 dilution Secondary: IRDye800CW Goat Anti-Rabbit IgG at 1/20000 dilution Predicted band size: 29 kD Observed band size: 29 kD



Sample: Lymph node (Mouse) Lysate at 40 ug Primary: Anti-MHC Class II/HLA DMB (bs-4107R) at 1/300 dilution Secondary: IRDye800CW Goat Anti-Rabbit IgG at 1/20000 dilution Predicted band size: 29 kD Observed band size: 29 kD



Tissue/cell: human lung carcinoma; 4% Paraformaldehyde-fixed and paraffin-embedded; Antigen retrieval: citrate buffer (0.01M, pH 6.0), Boiling bathing for 15min; Block endogenous peroxidase by 3% Hydrogen peroxide for 30min; Blocking buffer (normal goat serum, C-0005) at 37°C for 20 min; Incubation: Anti-MHC Class II/HLA-DPB1 Polyclonal Antibody, Unconjugated(bs-4107R) 1:200, overnight at 4°C, followed by conjugation to the secondary antibody(SP-0023) and DAB(C-0010) staining



Important Note: This product as supplied is intended for research use only, not for use in human, therapeutic or diagnostic applications.

Blank control: Mouse spleen. Primary Antibody (green line): Rabbit Anti-MHC Class II/HLA DMB/AF647 Conjugated antibody (bs-4107R-AF647) Dilution: 0.2µg /10⁶ cells; Isotype Control Antibody (orange line): Rabbit IgG-AF647 . Protocol The cells were fixed with 4% PFA (10min at room temperature)and then permeabilized with 0.1% PBST for 20 min at -20°C. The cells were then incubated in 5% BSA to block non-specific protein-protein interactions for 30 min at room temperature. The cells were stained with Primary Antibody for 30 min at room temperature. Acquisition of 20,000 events was performed.

— SELECTED CITATIONS —

- **[IF=7.182]** Chengxiao Wang. et al. Dissolvable microneedles based on Panax notoginseng polysaccharide for transdermal drug delivery and skin dendritic cell activation. Carbohydr Polym. 2021 May;;118211 IHC ;Mouse. 34127215
- **[IF=6.064]** Yanqiao Wen. et al. Regulation of Yujin Powder alcoholic extracts on ILC3s-TD IgA-colonic mucosal flora axis of DSS-induced ulcerative colitis.. FRONT MICROBIOL. 2022 Oct;13:1039884-1039884 WB ;Mouse. 36338041
- **[IF=1.41]** Li et al. lncRNA Malat1 modulates the maturation process, cytokine secretion and apoptosis in airway epithelial cell-conditioned dendritic cells. (2018) Exp.Ther.Med. 16:3951-3958 FCM ;Mouse. 30344673