

**bsm-51494M****[ Primary Antibody ]****BioSS**  
ANTIBODIES

www.bioss.com.cn

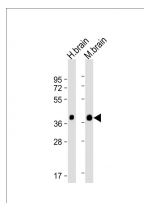
sales@bioss.com.cn

techsupport@bioss.com.cn

400-901-9800

**Synaptophysin Mouse mAb****— DATASHEET —**

<b>Host:</b> Mouse	<b>Isotype:</b> IgG1, k	<b>Applications:</b> WB (1:500-2000)  <b>Reactivity:</b> Human, Mouse (predicted: Rat)  <b>Predicted MW.:</b> 34 kDa  <b>Subcellular Location:</b> Cytoplasm
<b>Clonality:</b> Monoclonal	<b>CloneNo.:</b> G7F8	
<b>GeneID:</b> 6855	<b>SWISS:</b> P08247	
<b>Target:</b> Synaptophysin		
<b>Immunogen:</b> KLH conjugated synthetic peptide derived from human Synaptophysin: 201-300/313.		
<b>Purification:</b> affinity purified by Protein G		
<b>Concentration:</b> 1mg/ml		
<b>Storage:</b> 0.01M TBS (pH7.4) with 1% BSA, 0.02% Proclin300 and 50% Glycerol. Shipped at 4°C. Store at -20°C for one year. Avoid repeated freeze/thaw cycles.		
<b>Background:</b> This gene encodes an integral membrane protein of small synaptic vesicles in brain and endocrine cells. The protein also binds cholesterol and is thought to direct targeting of vesicle-associated membrane protein 2 (synaptobrevin) to intracellular compartments. Mutations in this gene are associated with X-linked mental retardation (XLMR). [provided by RefSeq, Aug 2011]		

**— VALIDATION IMAGES —**

Sample: Lane 1: Human brain tissue lysates Lane

2: Mouse brain tissue lysates Primary: Anti-

Synaptophysin (bsm-51494M) at 1/4000 dilution

Secondary: IRDye800CW Goat Anti-Mouse IgG at

1/20000 dilution Predicted band size: 34 kD

Observed band size: 38 kD