

bsm-51488M**[Primary Antibody]****CDC25C Mouse mAb****BioSS**
ANTIBODIES

www.bioss.com.cn

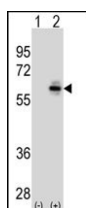
sales@bioss.com.cn

techsupport@bioss.com.cn

400-901-9800

— DATASHEET —

Host: Mouse	Isotype: IgG1, k	Applications: WB (1:500-2000)
Clonality: Monoclonal	CloneNo.: C4D2	Reactivity: Human
GeneID: 995	SWISS: P30307	
Target: CDC25C		
Purification: affinity purified by Protein G		
Concentration: 1mg/ml		Predicted MW.: 53 kDa
Storage: 0.01M TBS (pH7.4) with 1% BSA, 0.02% Proclin300 and 50% Glycerol. Shipped at 4°C. Store at -20°C for one year. Avoid repeated freeze/thaw cycles.		Subcellular Location: Nucleus
Background: This gene is highly conserved during evolution and it plays a key role in the regulation of cell division. The encoded protein is a tyrosine phosphatase and belongs to the Cdc25 phosphatase family. It directs dephosphorylation of cyclin B-bound CDC2 and triggers entry into mitosis. It is also thought to suppress p53-induced growth arrest. Multiple alternatively spliced transcript variants of this gene have been described, however, the full-length nature of many of them is not known. [provided by RefSeq, Jul 2008]		

— VALIDATION IMAGES —

Sample: Lane 1: 293 cell lysates Lane 2:
transiently transfected with the CDC25C gene
Primary: Anti-CDC25C (bsm-51488M) at 1/1000
dilution Secondary: IRDye800CW Goat Anti-
Mouse IgG at 1/20000 dilution Predicted band
size: 55 kD Observed band size: 58 kD