

bsm-51487M**[Primary Antibody]****CAMKK2 Mouse mAb****BioSS**
ANTIBODIES

www.bioss.com.cn

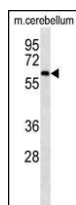
sales@bioss.com.cn

techsupport@bioss.com.cn

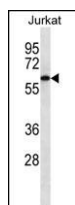
400-901-9800

— DATASHEET —

Host: Mouse	Isotype: IgG1, k	Applications: WB (1:200-1000)
Clonality: Monoclonal	CloneNo.: C5F12	Reactivity: Human, Mouse
GeneID: 10645	SWISS: Q96RR4	
Target: CAMKK2		
Purification: affinity purified by Protein G		
Concentration: 1mg/ml		
Storage: 0.01M TBS (pH7.4) with 1% BSA, 0.02% Proclin300 and 50% Glycerol. Shipped at 4°C. Store at -20°C for one year. Avoid repeated freeze/thaw cycles.		
Background: The product of this gene belongs to the Serine/Threonine protein kinase family, and to the Ca(2+)/calmodulin-dependent protein kinase subfamily. This protein plays a role in the calcium/calmodulin-dependent (CaM) kinase cascade by phosphorylating the downstream kinases CaMK1 and CaMK4. Seven transcript variants encoding six distinct isoforms have been identified for this gene. Additional splice variants have been described but their full-length nature has not been determined. The identified isoforms exhibit a distinct ability to undergo autophosphorylation and to phosphorylate the downstream kinases. [provided by RefSeq, Jul 2008].		
		Predicted MW.: 55 kDa
		Subcellular Location: Nucleus

— VALIDATION IMAGES —

Sample: Lane 1: Mouse Cerebellum tissue lysates
Primary: Anti-CAMKK2 (bsm-51487M) at 1/1000 dilution
Secondary: IRDye800CW Goat Anti-Mouse IgG at 1/20000 dilution
Predicted band size: 55 kD
Observed band size: 58 kD



Sample: Lane 1: Jurkat cell lysates
Primary: Anti-CAMKK2 (bsm-51487M) at 1/1000 dilution
Secondary: IRDye800CW Goat Anti-Mouse IgG at 1/20000 dilution
Predicted band size: 55 kD
Observed band size: 58 kD