

bs-2400R**[Primary Antibody]****BioSS**
ANTIBODIES

www.bioss.com.cn

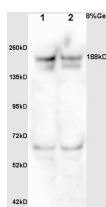
sales@bioss.com.cn

techsupport@bioss.com.cn

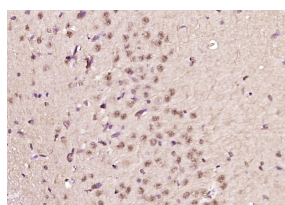
400-901-9800

MDC1 Rabbit pAb**— DATASHEET —**

Host: Rabbit Clonality: Polyclonal GeneID: 9656 Target: MDC1 Immunogen: KLH conjugated synthetic peptide derived from human NFB1: 31-130/2089. Purification: affinity purified by Protein A Concentration: 1mg/ml Storage: 0.01M TBS (pH7.4) with 1% BSA, 0.02% Proclin300 and 50% Glycerol. Shipped at 4°C. Store at -20°C for one year. Avoid repeated freeze/thaw cycles. Background: The protein encoded by this gene contains an N-terminal forkhead domain, two BRCA1 C-terminal (BRCT) motifs and a central domain with 13 repetitions of an approximately 41-amino acid sequence. The encoded protein is required to activate the intra-S phase and G2/M phase cell cycle checkpoints in response to DNA damage. This nuclear protein interacts with phosphorylated histone H2AX near sites of DNA double-strand breaks through its BRCT motifs, and facilitates recruitment of the ATM kinase and meiotic recombination 11 protein complex to DNA damage foci. [provided by RefSeq].	Isotype: IgG SWISS: Q14676	Applications: WB (1:500-2000) IHC-P (1:100-500) IHC-F (1:100-500) IF (1:100-500) Reactivity: Mouse, Rat (predicted: Human, Pig, Cow, Dog, Horse) Predicted MW.: 226 kDa Subcellular Location: Nucleus
--	---	--

— VALIDATION IMAGES —

Protein: embryo(mouse) lysates at 30ug;
testis(mouse) lysates at 30ug; Primary: Anti-
NFB1/MDC1 (bs-2400R) at 1:200; Secondary:
HRP conjugated Goat Anti-Rabbit IgG(bs-0295G-
HRP) at 1: 3000; ECL excited the fluorescence;
Predicted band size : 188kD Observed band size :
188kD



Paraformaldehyde-fixed, paraffin embedded (rat
brain tissue); Antigen retrieval by boiling in
sodium citrate buffer (pH6.0) for 15min; Block
endogenous peroxidase by 3% hydrogen
peroxide for 20 minutes; Blocking buffer (normal
goat serum) at 37°C for 30min; Antibody
incubation with (MDC1) Polyclonal Antibody,
Unconjugated (bs-2400R) at 1:200 overnight at
4°C, followed by operating according to SP
Kit(Rabbit) (sp-0023) instructions and DAB
staining.

— SELECTED CITATIONS —

- **[IF=3.373]** Zhang et al. Simultaneous targeting of ATM and Mcl-1 increases cisplatin sensitivity of cisplatin-resistant non-small cell lung cancer. (2017) Cancer.Biol.Ther. 18:606-615 WB ;Human. 28686074