

bs-1893R**[Primary Antibody]****Bioss**
ANTIBODIES

www.bioss.com.cn

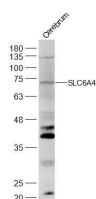
sales@bioss.com.cn

techsupport@bioss.com.cn

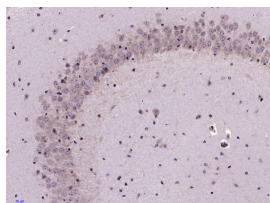
400-901-9800

Serotonin transporter Rabbit pAb**DATASHEET**

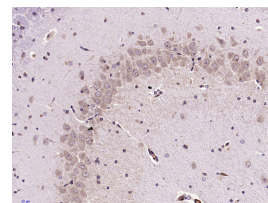
Host: Rabbit	Isotype: IgG	Applications: WB (1:500-2000) IHC-P (1:100-500) IHC-F (1:100-500) IF (1:100-500)
Clonality: Polyclonal		
GeneID: 6532	SWISS: P31645	
Target: Serotonin transporter		
Immunogen: KLH conjugated synthetic peptide derived from human 5-HTT: 401-500/630.		
Purification: affinity purified by Protein A		
Concentration: 1mg/ml		
Storage: 0.01M TBS (pH7.4) with 1% BSA, 0.02% Proclin300 and 50% Glycerol. Shipped at 4°C. Store at -20°C for one year. Avoid repeated freeze/thaw cycles.		
Background: This gene encodes an integral membrane protein that transports the neurotransmitter serotonin from synaptic spaces into presynaptic neurons. The encoded protein terminates the action of serotonin and recycles it in a sodium-dependent manner. This protein is a target of psychomotor stimulants, such as amphetamines and cocaine, and is a member of the sodium:neurotransmitter symporter family. A repeat length polymorphism in the promoter of this gene has been shown to affect the rate of serotonin uptake and may play a role in sudden infant death syndrome, aggressive behavior in Alzheimer disease patients, and depression-susceptibility in people experiencing emotional trauma. [provided by RefSeq, Jul 2008].		
		Reactivity: Human, Mouse, Rat (predicted: Pig, Sheep, Cow, Chicken, Dog, GuineaPig)
		Predicted MW.: 70 kDa
		Subcellular Location: Cell membrane

VALIDATION IMAGES

Sample: Cerebrum (Mouse) Lysate at 40 ug
Primary: Anti-SLC6A4 (bs-1893R) at 1/500
dilution Secondary: IRDye800CW Goat Anti-Rabbit IgG at 1/20000 dilution Predicted band size: 70 kD Observed band size: 70 kD



Paraformaldehyde-fixed, paraffin embedded (Mouse brain); Antigen retrieval by microwave in sodium citrate buffer (pH6.0) ; Block endogenous peroxidase by 3% hydrogen peroxide for 30 minutes; Blocking buffer (3% BSA) at RT for 30min; Antibody incubation with (Serotonin transporter) Polyclonal Antibody, Unconjugated (bs-1893R) at 1:400 overnight at 4°C, followed by conjugation to the secondary antibody (labeled with HRP) and DAB staining.



Paraformaldehyde-fixed, paraffin embedded (Rat brain); Antigen retrieval by microwave in sodium citrate buffer (pH6.0) ; Block endogenous peroxidase by 3% hydrogen peroxide for 30 minutes; Blocking buffer (3% BSA) at RT for 30min; Antibody incubation with (Serotonin transporter) Polyclonal Antibody, Unconjugated (bs-1893R) at 1:400 overnight at 4°C, followed by conjugation to the secondary antibody (labeled with HRP) and DAB staining.

SELECTED CITATIONS

- **[IF=5.561]** Lei Wu. et al. Ethanol Extract of Mao Jian Green Tea Attenuates Gastrointestinal Symptoms in a Rat Model of Irritable Bowel Syndrome with Constipation via the 5-hydroxytryptamine Signaling Pathway. FOODS. 2023 Jan;12(5):1101 WB ;Rat. 36900618
- **[IF=3.8]** Paul C. Omaliko. et al. Impact of Dietary Fat Types on expression levels of Dopamine and Serotonin transporters in the Ileum of broiler chickens. POULTRY SCI. 2024 Jul;104114 WB ;Chicken. 10.1016/j.psj.2024.104114

Important Note: This product as supplied is intended for research use only, not for use in human, therapeutic or diagnostic applications.

- **[IF=3.693]** Huang X et al. The development of the serotonergic and dopaminergic systems during chicken mid-late embryogenesis. *Mol Cell Endocrinol.* 2019 Aug 1;493:110472. IF, WB ;Hen(egg). 31167113
- **[IF=2.75]** Dong, Xian-Zhe, et al. "A representative prescription for emotional disease, Ding-Zhi-Xiao-Wan restores 5-HT system deficit through interfering the synthesis and transshipment in chronic mild stress-induced depressive Rats." *Journal of Ethnopharmacology* (2013). WB ;="Rat". 24184266
- **[IF=3.3]** Wojtal, Kacper Andrzej, et al. "Down-regulation of duodenal SLC transporters and activation of pro-inflammatory signaling constitute the early response to high altitude in humans." *American Journal of Physiology-Gastrointestinal and Liver Physiology* (2014): ajpgi-00353. WB ;="Human". 24970780