

bs-2906R**[Primary Antibody]****Bioss**
ANTIBODIES

www.bioss.com.cn

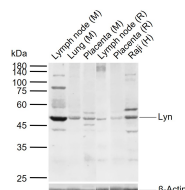
sales@bioss.com.cn

techsupport@bioss.com.cn

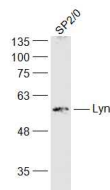
400-901-9800

Lyn Rabbit pAb**DATASHEET**

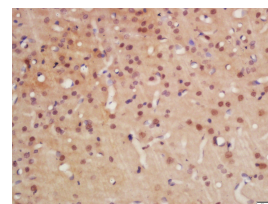
Host: Rabbit	Isotype: IgG	Applications: WB (1:500-2000) IHC-P (1:100-500) IHC-F (1:100-500) IF (1:100-500) Reactivity: Human, Mouse, Rat (predicted: Rabbit, Sheep, Cow, Dog, Horse) Predicted MW.: 58 kDa Subcellular Location: Cell membrane ,Cytoplasm ,Nucleus
Clonality: Polyclonal		
GeneID: 4067	SWISS: P07948	
Target: Lyn		
Immunogen: KLH conjugated synthetic peptide derived from human Lyn: 201-300/512.		
Purification: affinity purified by Protein A		
Concentration: 1mg/ml		
Storage: 0.01M TBS (pH7.4) with 1% BSA, 0.02% Proclin300 and 50% Glycerol. Shipped at 4°C. Store at -20°C for one year. Avoid repeated freeze/thaw cycles.		
Background: This gene encodes a tyrosine protein kinase, which maybe involved in the regulation of mast cell degranulation, and erythroid differentiation. Alternatively spliced transcript variants encoding different isoforms have been found for this gene. [provided by RefSeq, Jul 2011]		

VALIDATION IMAGES

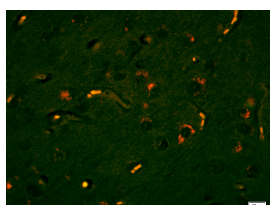
Sample: Lane 1: Mouse Lymph node tissue lysates Lane 2: Mouse Lung tissue lysates Lane 3: Mouse Placenta tissue lysates Lane 4: Rat Lymph node tissue lysates Lane 5: Rat Placenta tissue lysates Lane 6: Human Raji cell lysates Primary: Anti-Lyn (bs-2906R) at 1/1000 dilution Secondary: IRDye800CW Goat Anti-Rabbit IgG at 1/20000 dilution Predicted band size: 58 kDa Observed band size: 50 kDa



Sample: SP2/0(Mouse) Cell Lysate at 30 ug Primary: Anti-Lyn (bs-2906R) at 1/1000 dilution Secondary: IRDye800CW Goat Anti-Rabbit IgG at 1/20000 dilution Predicted band size: 58 kDa Observed band size: 58 kDa



Tissue/cell: rat brain tissue; 4% Paraformaldehyde-fixed and paraffin-embedded; Antigen retrieval: citrate buffer (0.01M, pH 6.0), Boiling bathing for 15min; Block endogenous peroxidase by 3% Hydrogen peroxide for 30min; Blocking buffer (normal goat serum, C-0005) at 37°C for 20 min; Incubation: Anti-Lyn Polyclonal Antibody, Unconjugated(bs-2906R) 1:200, overnight at 4°C, followed by conjugation to the secondary antibody(SP-0023) and DAB(C-0010) staining



Tissue/cell: human glioma tissue; 4% Paraformaldehyde-fixed and paraffin-embedded; Antigen retrieval: citrate buffer (0.01M, pH 6.0), Boiling bathing for 15min; Blocking buffer (normal goat serum, C-0005) at 37°C for 20 min; Incubation: Anti-Lyn Polyclonal Antibody, PE conjugated (bs-2906R-PE) 1:200, used at 1:200 dilution for 60 minutes at 37°C. Excitation wavelength: 488nm, 555nm; Emission

Important Note: This product as supplied is intended for research use only, not for use in human, therapeutic or diagnostic applications.

— SELECTED CITATIONS —

- **[IF=5.4]** Xiangyu Liang. et al. Effects and potential mechanisms of Saposhnikovia divaricata (Turcz.) Schischk. On type I allergy and pseudoallergic reactions in vitro and in vivo. J ETHNOPHARMACOL. 2024 Jan;318:116942 WB ;Rat. 37487961
- **[IF=3.118]** Fu S et al. Berberine suppresses mast cell-mediated allergic responses via regulating FcεRI-mediated and MAPK signaling.Int Immunopharmacol. 2019 Jun;71:1-6. WB ;Human. 30861392
- **[IF=0]** Hany Y Sayed. et al.Role of Lyn Immunohistochemical Staining in Progression of Colorectal Carcinoma..Asian Pacific Journal of Cancer Prevention.2025 Mar 1;26(3):943-948. IHC ;Human. 40156411