

bsm-51475M**[Primary Antibody]****RPS6KB2 Mouse mAb****BioSS**
ANTIBODIES

www.bioss.com.cn

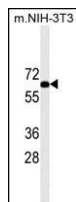
sales@bioss.com.cn

techsupport@bioss.com.cn

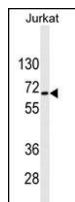
400-901-9800

— DATASHEET —

Host: Mouse	Isotype: IgG1, k	Applications: WB (1:500-2000) Reactivity: Human, Mouse Predicted MW.: 53 kDa Subcellular Location: Cytoplasm ,Nucleus
Clonality: Monoclonal	CloneNo.: G8F7	
GeneID: 6199	SWISS: Q9UBS0	
Target: RPS6KB2		
Purification: affinity purified by Protein G		
Concentration: 1mg/ml		
Storage: 0.01M TBS (pH7.4) with 1% BSA, 0.02% Proclin300 and 50% Glycerol. Shipped at 4°C. Store at -20°C for one year. Avoid repeated freeze/thaw cycles.		
Background: This gene encodes a member of the ribosomal S6 kinase family of serine/threonine kinases. The encoded protein responds to mTOR (mammalian target of rapamycin) signaling to promote protein synthesis, cell growth, and cell proliferation. Activity of this gene has been associated with human cancer. Alternatively spliced transcript variants have been observed. The use of alternative translation start sites results in isoforms with longer or shorter N-termini which may differ in their subcellular localizations. There are two pseudogenes for this gene on chromosome 17. [provided by RefSeq, Jan 2013].		

— VALIDATION IMAGES —

Sample: Lane 1: Mouse NIH/3T3 cell lysates
Primary: Anti-RPS6KB2 (bsm-51475M) at 1/1000 dilution
Secondary: IRDye800CW Goat Anti-Mouse IgG at 1/20000 dilution
Predicted band size: 53 kD
Observed band size: 68 kD



Sample: Lane 1: Jurkat cell lysates
Primary: Anti-RPS6KB2 (bsm-51475M) at 1/1000 dilution
Secondary: IRDye800CW Goat Anti-Mouse IgG at 1/20000 dilution
Predicted band size: 53 kD
Observed band size: 68 kD