

bsm-51474M**[Primary Antibody]****LAMP2 Mouse mAb****BioSS**
ANTIBODIES

www.bioss.com.cn

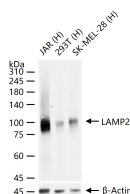
sales@bioss.com.cn

techsupport@bioss.com.cn

400-901-9800

— DATASHEET —

| | | |
|---|---|---|
| Host: Mouse Clonality: Monoclonal GeneID: 3920 Target: LAMP2 Purification: affinity purified by Protein G Concentration: 1mg/ml Storage: 0.01M TBS (pH7.4) with 1% BSA, 0.02% Proclin300 and 50% Glycerol. Shipped at 4°C. Store at -20°C for one year. Avoid repeated freeze/thaw cycles. Background: The protein encoded by the LAMP2 gene is a member of a family of membrane glycoproteins. This glycoprotein provides selectins with carbohydrate ligands and is thought to play a role in tumor cell metastasis. It may also function in the protection, maintenance, and adhesion of the lysosome. Alternative splicing of the gene produces two known products, LAMP2a and LAMP2b. Isoform LAMP2a is highly expressed in placenta, lung and liver and has low expression in brain and skeletal muscle. The isoform detected by this antibody, LAMP2b, is highly expressed in skeletal muscle less so in brain, placental, lung, kidney and pancreas and has very low expression in liver. | Isotype: IgG1,k CloneNo.: L3G4 SWISS: P13473 | Applications: WB (1:500-2000) IHC-P (1:100-500) IHC-F (1:400-800) IF (1:10-50) Reactivity: Human Predicted MW.: 45 kDa Subcellular Location: Cell membrane ,Cytoplasm |
|---|---|---|

— VALIDATION IMAGES —

25 ug total protein per lane of various lysates (see on figure) probed with LAMP2 monoclonal antibody, unconjugated (bsm-51474M) at 1:500 dilution and 4°C overnight incubation. Followed by conjugated secondary antibody incubation at r.t. for 60 min.

— SELECTED CITATIONS —

- **[IF=7.666]** Kenji Ono. et al. Calmodulin as a Key Regulator of Exosomal Signal Peptides. CELLS-BASEL. 2023 Jan;12(1):158 ICC ;Human. 36611951