

bs-19655R

[Primary Antibody]

SERGEF Rabbit pAb

Bioss
ANTIBODIES

www.bioss.com.cn

sales@bioss.com.cn

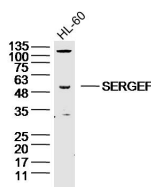
techsupport@bioss.com.cn

400-901-9800

— DATASHEET —

Host: Rabbit	Isotype: IgG	Applications: WB (1:500-2000)
Clonality: Polyclonal		Reactivity: Human (predicted: Mouse, Rat)
GeneID: 26297	SWISS: Q9UGK8	
Target: SERGEF		Predicted MW.: 50 kDa
Immunogen: KLH conjugated synthetic peptide derived from human SERGEF: 241-340/458.		Subcellular Location: Secreted ,Cytoplasm ,Nucleus
Purification: affinity purified by Protein A		
Concentration: 1mg/ml		
Storage: 0.01M TBS (pH7.4) with 1% BSA, 0.02% Proclin300 and 50% Glycerol. Shipped at 4°C. Store at -20°C for one year. Avoid repeated freeze/thaw cycles.		

— VALIDATION IMAGES —



Sample: HL-60 Cell (Human) Lysate at 40 ug
Primary: Anti-SERGEF(bs-19655R)at 1/300
dilution Secondary: IRDye800CW Goat Anti-
Rabbit IgG at 1/20000 dilution Predicted band
size: 50kD Observed band size: 50kD