

bs-19641R

[Primary Antibody]

OMA1 Rabbit pAb

Bioss
ANTIBODIES

www.bioss.com.cn

sales@bioss.com.cn

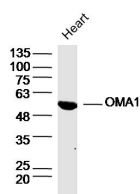
techsupport@bioss.com.cn

400-901-9800

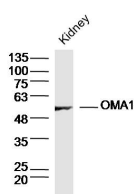
— DATASHEET —

Host: Rabbit	Isotype: IgG	Applications: WB (1:500-2000) IHC-P (1:100-500) IHC-F (1:100-500) IF (1:100-500) Reactivity: Human, Mouse, Rat (predicted: Rabbit, Pig, Cow, Zebrafish, Chicken, Cat, Horse) Predicted MW.: 60 kDa Subcellular Location: Cytoplasm
Clonality: Polyclonal		
GeneID: 115209	SWISS: Q96E52	
Target: OMA1		
Immunogen: KLH conjugated synthetic peptide derived from human OMA1: 401-500/524.		
Purification: affinity purified by Protein A		
Concentration: 1mg/ml		
Storage: 0.01M TBS (pH7.4) with 1% BSA, 0.02% Proclin300 and 50% Glycerol. Shipped at 4°C. Store at -20°C for one year. Avoid repeated freeze/thaw cycles.		

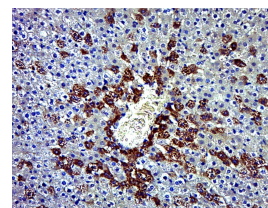
— VALIDATION IMAGES —



Sample: Heart (Rat) Lysate at 40 ug Primary:
Anti- OMA1 (bs-19641R) at 1/300 dilution
Secondary: IRDye800CW Goat Anti-Rabbit IgG at
1/20000 dilution Predicted band size: 60 kD
Observed band size: 55 kD



Sample: Kidney (Mouse) Lysate at 40 ug Primary:
Anti- OMA1 (bs-19641R) at 1/300 dilution
Secondary: IRDye800CW Goat Anti-Rabbit IgG at
1/20000 dilution Predicted band size: 60 kD
Observed band size: 55 kD



Paraformaldehyde-fixed, paraffin embedded (Rat liver); Antigen retrieval by boiling in sodium citrate buffer (pH6.0) for 15min; Block endogenous peroxidase by 3% hydrogen peroxide for 20 minutes; Blocking buffer (normal goat serum) at 37°C for 30min; Antibody incubation with (OMA1) Polyclonal Antibody, Unconjugated (bs-19641R) at 1:500 overnight at 4°C, followed by a conjugated secondary (sp-0023) for 20 minutes and DAB staining.