

bs-19639R**[Primary Antibody]****OLFML2A Rabbit pAb****Bioss**
ANTIBODIES

www.bioss.com.cn

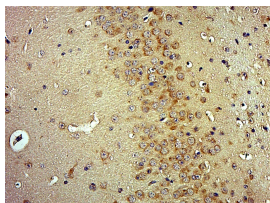
sales@bioss.com.cn

techsupport@bioss.com.cn

400-901-9800

— DATASHEET —

Host: Rabbit	Isotype: IgG	Applications: IHC-P (1:100-500) IHC-F (1:100-500) IF (1:100-500) Reactivity: Mouse (predicted: Human, Rat, Rabbit, Pig, Cow, Zebrafish, Chicken, Dog, Cat, GuineaPig, Horse) Predicted MW.: 65 kDa Subcellular Location: Secreted
Clonality: Polyclonal		
GeneID: 169611	SWISS: Q68BL7	
Target: OLFML2A		
Immunogen: KLH conjugated synthetic peptide derived from human OLFML2A: 501-600/652.		
Purification: affinity purified by Protein A		
Concentration: 1mg/ml		
Storage: 0.01M TBS (pH7.4) with 1% BSA, 0.02% Proclin300 and 50% Glycerol. Shipped at 4°C. Store at -20°C for one year. Avoid repeated freeze/thaw cycles.		
Background: OLFML2A contains one olfactomedin-like domain. Its exact function is unknown. There are three named isoforms produced by alternative splicing.		

— VALIDATION IMAGES —

Paraformaldehyde-fixed, paraffin embedded (Mouse brain); Antigen retrieval by boiling in sodium citrate buffer (pH6.0) for 15min; Block endogenous peroxidase by 3% hydrogen peroxide for 20 minutes; Blocking buffer (normal goat serum) at 37°C for 30min; Antibody incubation with (OLFML2A) Polyclonal Antibody, Unconjugated (bs-19639R) at 1:500 overnight at 4°C, followed by a conjugated secondary (sp-0023) for 20 minutes and DAB staining.