

bs-9569R**[Primary Antibody]****POLR3C Rabbit pAb****BioSS**
ANTIBODIES

www.bioss.com.cn

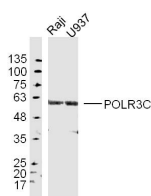
sales@bioss.com.cn

techsupport@bioss.com.cn

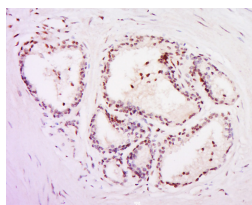
400-901-9800

— DATASHEET —

Host: Rabbit Clonality: Polyclonal GeneID: 10623 Target: POLR3C Immunogen: KLH conjugated synthetic peptide derived from human POLR3C: 21-120/534. Purification: affinity purified by Protein A Concentration: 1mg/ml Storage: 0.01M TBS (pH7.4) with 1% BSA, 0.02% Proclin300 and 50% Glycerol. Shipped at 4°C. Store at -20°C for one year. Avoid repeated freeze/thaw cycles.	Isotype: IgG SWISS: Q53F76	Applications: WB (1:500-2000) IHC-P (1:100-500) IHC-F (1:100-500) IF (1:100-500) Reactivity: Human Predicted MW.: 61 kDa Subcellular Location: Nucleus
--	---	---

— VALIDATION IMAGES —

Protein: Raji(human) lysate at 40ug;
 U937(human) lysate at 40ug; Primary: rabbit
 Anti-POLR3C(bs-9569R) at 1:300; Secondary:
 IRDye800CW Goat Anti-Rabbit IgG at 1/20000
 dilution Predicted band size: 61 kD Observed
 band size: 61 kD



Tissue/cell: human prostate tissue; 4%
 Paraformaldehyde-fixed and paraffin-
 embedded; Antigen retrieval: citrate buffer (0.01M, pH 6.0), Boiling bathing for 15min; Block
 endogenous peroxidase by 3% Hydrogen
 peroxide for 30min; Blocking buffer (normal goat
 serum, C-0005) at 37°C for 20 min; Incubation:
 Anti-POLR3C Polyclonal Antibody,
 Unconjugated(bs-9569R) 1:500, overnight at 4°C,
 followed by conjugation to the secondary
 antibody(SP-0023) and DAB(C-0010) staining