

bs-4958R**[Primary Antibody]****PCGF1 Rabbit pAb****BioSS**
ANTIBODIES

www.bioss.com.cn

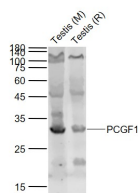
sales@bioss.com.cn

techsupport@bioss.com.cn

400-901-9800

— DATASHEET —

Host: Rabbit	Isotype: IgG	Applications: WB (1:500-2000)
Clonality: Polyclonal		
GeneID: 84759	SWISS: Q9BSM1	
Target: PCGF1		
Immunogen: KLH conjugated synthetic peptide derived from human PCGF1: 51-150/259.		
Purification: affinity purified by Protein A		Reactivity: Mouse, Rat (predicted: Human, Rabbit, Cow, Dog, Horse)
Concentration: 1mg/ml		
Storage: 0.01M TBS (pH7.4) with 1% BSA, 0.02% Proclin300 and 50% Glycerol. Shipped at 4°C. Store at -20°C for one year. Avoid repeated freeze/thaw cycles.		
Background: PCGF1 is a component of the Polycomb group (PcG) multiprotein BCOR complex, a complex required to maintain the transcriptionally repressive state of some genes, such as BCL6 and the cyclin-dependent kinase inhibitor, CDKN1A. It represses CDKN1A expression by binding to its promoter, and this repression is dependent on the retinoic acid response element (RARE element). PCGF1 also promotes cell cycle progression and also enhances cell proliferation, thus it may have a positive role in tumor cell growth.		
		Predicted MW.: 30 kDa
		Subcellular Location: Nucleus

— VALIDATION IMAGES —

Sample: Lane 1: Testis (Mouse) Lysate at 40 ug
Lane 2: Testis (Rat) Lysate at 40 ug Primary: Anti-PCGF1 (bs-4958R) at 1/1000 dilution Secondary: IRDye800CW Goat Anti-Rabbit IgG at 1/20000 dilution Predicted band size: 30 kD Observed band size: 30 kD