

bs-21252R**[Primary Antibody]****SLC30A2 Rabbit pAb****Bioss**
ANTIBODIES

www.bioss.com.cn

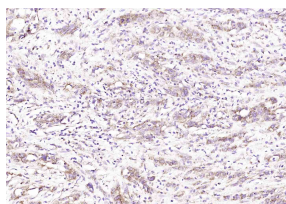
sales@bioss.com.cn

techsupport@bioss.com.cn

400-901-9800

— DATASHEET —

Host: Rabbit	Isotype: IgG	Applications: IHC-P (1:100-500) IHC-F (1:100-500) IF (1:100-500) Reactivity: Human Predicted MW.: 35 kDa Subcellular Location: Cell membrane
Clonality: Polyclonal		
GeneID: 7780	SWISS: Q9BRI3	
Target: SLC30A2		
Immunogen: KLH conjugated synthetic peptide derived from human SLC30A2: 21-120/323. < Cytoplasmic >		
Purification: affinity purified by Protein A		
Concentration: 1mg/ml		
Storage: Preservative: 0.02% Proclin300, Constituents: 1% BSA, 0.01M PBS, pH7.4. Shipped at 4°C. Store at -20°C for one year. Avoid repeated freeze/thaw cycles.		
Background: The protein encoded by this gene is a zinc transporter that acts as a homodimer. The encoded protein plays a role in secreting zinc into breast milk. Two transcript variants encoding different isoforms have been found for this gene. [provided by RefSeq, Aug 2015]		

— VALIDATION IMAGES —

Paraformaldehyde-fixed, paraffin embedded (Human ovarian); Antigen retrieval by boiling in sodium citrate buffer (pH6.0) for 15min; Block endogenous peroxidase by 3% hydrogen peroxide for 20 minutes; Blocking buffer (normal goat serum) at 37°C for 30min; Antibody incubation with (SLC30A2) Polyclonal Antibody, Unconjugated (bs-21252R) at 1:200 overnight at 4°C, followed by operating according to SP Kit(Rabbit) (sp-0023) instructions and DAB staining.