

**bs-12087R****[ Primary Antibody ]****KCTD8 Rabbit pAb****BioSS**  
**ANTIBODIES**

www.bioss.com.cn

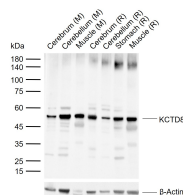
sales@bioss.com.cn

techsupport@bioss.com.cn

400-901-9800

**— DATASHEET —**

<b>Host:</b> Rabbit	<b>Isotype:</b> IgG	<b>Applications:</b> WB (1:500-2000)
<b>Clonality:</b> Polyclonal		<b>Reactivity:</b> Mouse, Rat (predicted: Human, Rabbit, Pig, Sheep, Cow, Chicken, Dog, Horse)
<b>GeneID:</b> 386617	<b>SWISS:</b> Q6ZWB6	<b>Predicted MW.:</b> 52 kDa
<b>Target:</b> KCTD8		<b>Subcellular Location:</b> Cell membrane
<b>Immunogen:</b> KLH conjugated synthetic peptide derived from human KCTD8: 381-473/473.		
<b>Purification:</b> affinity purified by Protein A		
<b>Concentration:</b> 1mg/ml		
<b>Storage:</b> 0.01M TBS (pH7.4) with 1% BSA, 0.02% Proclin300 and 50% Glycerol. Shipped at 4°C. Store at -20°C for one year. Avoid repeated freeze/thaw cycles.		
<b>Background:</b> Auxiliary subunit of GABA-B receptors that determine the pharmacology and kinetics of the receptor response. Increases agonist potency and markedly alter the G-protein signaling of the receptors by accelerating onset and promoting desensitization.		

**— VALIDATION IMAGES —**

Sample: Lane 1: Mouse Cerebrum tissue lysates  
Lane 2: Mouse Cerebellum tissue lysates Lane 3:  
Mouse Muscle tissue lysates Lane 4: Rat  
Cerebrum tissue lysates Lane 5: Rat Cerebellum  
tissue lysates Lane 6: Rat Stomach tissue lysates  
Lane 7: Rat Muscle tissue lysates Primary: Anti-  
KCTD8 (bs-12087R) at 1/1000 dilution  
Secondary: IRDye800CW Goat Anti-Rabbit IgG at  
1/20000 dilution Predicted band size: 52 kDa  
Observed band size: 52 kDa