

bs-0711R**[Primary Antibody]****FAM3B Rabbit pAb****Bioss**
ANTIBODIES

www.bioss.com.cn

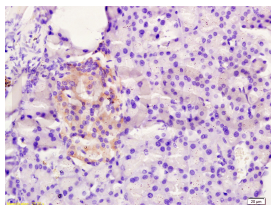
sales@bioss.com.cn

techsupport@bioss.com.cn

400-901-9800

— DATASHEET —

Host: Rabbit	Isotype: IgG	Applications: IHC-P (1:100-500)
Clonality: Polyclonal		IHC-F (1:100-500)
GeneID: 54097	SWISS: P58499	IF (1:100-500)
Target: FAM3B		Reactivity: Rat (predicted: Human, Mouse)
Immunogen: KLH conjugated synthetic peptide derived from human FAM3B: 1-100/235.		
Purification: affinity purified by Protein A		Predicted MW.: 23 kDa
Concentration: 1mg/ml		Subcellular Location: Secreted
Storage: 0.01M TBS (pH7.4) with 1% BSA, 0.02% Proclin300 and 50% Glycerol. Shipped at 4°C. Store at -20°C for one year. Avoid repeated freeze/thaw cycles.		
Background: FAM3B has delayed effects on beta-cell function, inhibiting basal insulin secretion from a beta-cell line in a dose-dependent manner. [Subcellular Location] Secreted. Note=Localized in discrete vesicular and perinuclear structure. Highly expressed in the pancreas. Also found in the colon, kidney, prostate, small intestine and testis. 2 N-termini have been observed in the mature protein: the first at Glu-30, resulting from signal peptide cleavage, the second at Ser-46. Belongs to the FAM3 family.		

— VALIDATION IMAGES —

Tissue/cell: rat pancreas tissue; 4% Paraformaldehyde-fixed and paraffin-embedded; Antigen retrieval: citrate buffer (0.01M, pH 6.0), Boiling bathing for 15min; Block endogenous peroxidase by 3% Hydrogen peroxide for 30min; Blocking buffer (normal goat serum, C-0005) at 37°C for 20 min; Incubation: Anti-FAM3B/PANDER Polyclonal Antibody, Unconjugated(bs-0711R) 1:200, overnight at 4°C, followed by conjugation to the secondary antibody(SP-0023) and DAB(C-0010) staining