

bs-21251R**[Primary Antibody]****SLC2A7 Rabbit pAb****Bioss**
ANTIBODIES

www.bioss.com.cn

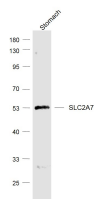
sales@bioss.com.cn

techsupport@bioss.com.cn

400-901-9800

— DATASHEET —

Host: Rabbit	Isotype: IgG	Applications: WB (1:500-2000)
Clonality: Polyclonal		Reactivity: Mouse (predicted: Human, Rat)
GeneID: 155184	SWISS: Q6PXP3	
Target: SLC2A7		Predicted MW.: 56 kDa
Immunogen: KLH conjugated synthetic peptide derived from human SLC2A7: 1-100/512. < Extracellular >		Subcellular Location: Cell membrane
Purification: affinity purified by Protein A		
Concentration: 1mg/ml		
Storage: Preservative: 0.02% Proclin300, Constituents: 1% BSA, 0.01M PBS, pH7.4. Shipped at 4°C. Store at -20°C for one year. Avoid repeated freeze/thaw cycles.		
Background: SLC2A7 belongs to a family of transporters that catalyze the uptake of sugars through facilitated diffusion (Li et al., 2004). This family of transporters shows conservation of 12 transmembrane helices as well as functionally significant amino acid residues (Joost and Thorens, 2001 [PubMed 11780753]).[supplied by OMIM, Mar 2008]		

— VALIDATION IMAGES —

Sample: Stomach (Mouse) Lysate at 40 ug
Primary: Anti-SLC2A7 (bs-21251R) at 1/1000
dilution Secondary: IRDye800CW Goat Anti-Rabbit IgG at 1/20000 dilution Predicted band size: 56 kD Observed band size: 56 kD