

bs-0202R**[Primary Antibody]****Bioss**
ANTIBODIES

www.bioss.com.cn

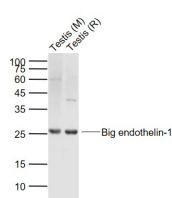
sales@bioss.com.cn

techsupport@bioss.com.cn

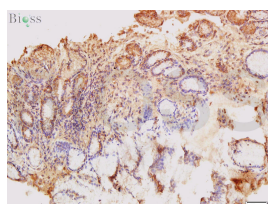
400-901-9800

PPET1 Rabbit pAb**— DATASHEET —**

Host: Rabbit	Isotype: IgG	Applications: WB (1:500-2000)
Clonality: Polyclonal		IHC-P (1:100-500)
GeneID: 1906	SWISS: P05305	IHC-F (1:100-500)
Target: PPET1		IF (1:100-500)
Immunogen: KLH conjugated synthetic peptide derived from human Big endothelin-1: 81-212/212.		Reactivity: Human, Mouse, Rat
Purification: affinity purified by Protein A		
Concentration: 1mg/ml		Predicted MW.: 22 kDa
Storage: 0.01M TBS (pH7.4) with 1% BSA, 0.02% Proclin300 and 50% Glycerol. Shipped at 4°C. Store at -20°C for one year. Avoid repeated freeze/thaw cycles.		Subcellular Location: Secreted
Background: Endothelins (ET) show potent constrictor activity in vascular and non-vascular smooth muscle. This family of 21-amino acid peptides exists in at least three isoforms - ET-1, ET-2, and ET-3, and is produced in endothelial and epithelial cells. ET's can mediate biological effects in cells and tissues, and have been shown to bind to an ET receptor in the lung, kidney, heart, and liver. Endothelin 1 is expressed in lung, placental stem villi vessels and in cultured placental vascular smooth muscle cells. Molecular weight: 2491.9 Molecular formula: C ₁₀₉ H ₁₅₉ N ₂₅ O ₃₂ S ₅ CAS: 117399-94-7 MDL: MFCD00133305 Reconstitution: 1mM (1mg/0.4013mL)		

— VALIDATION IMAGES —

Sample: Lane 1: Testis (Mouse) Lysate at 40 ug
Lane 2: Testis (Rat) Lysate at 40 ug
Primary: Anti-Big endothelin-1 (bs-0202R) at 1/1000 dilution
Secondary: IRDye800CW Goat Anti-Rabbit IgG at 1/20000 dilution
Predicted band size: 24 kD
Observed band size: 26 kD



Tissue/cell: human gastric mucosa; 4% Paraformaldehyde-fixed and paraffin-embedded; Antigen retrieval: citrate buffer (0.01M, pH 6.0), Boiling bathing for 15min; Block endogenous peroxidase by 3% Hydrogen peroxide for 30min; Blocking buffer (normal goat serum, C-0005) at 37°C for 20 min; Incubation: Anti-ET-1 Polyclonal Antibody, Unconjugated(bs-0202R) 1:300, overnight at 4°C, followed by conjugation to the secondary antibody(SP-0023) and DAB(C-0010) staining

— SELECTED CITATIONS —

- **[IF=3.647]** Juan Wang. et al. NR4A3 induces endothelial dysfunction through up-regulation of endothelial 1 expression in adipose tissue-derived stromal cells. Life Sci. 2021 Jan;264:118727 IF ;Human. 33221345
- **[IF=3.3]** Auburn R. Berry. et al. The non-nutritive sweetener erythritol adversely affects brain microvascular endothelial cell function. J APPL PHYSIOL. 2025 Jun;138(6):1571-1577 ;Human. 40459966

Important Note: This product as supplied is intended for research use only, not for use in human, therapeutic or diagnostic applications.