

bs-0188R**[Primary Antibody]**

Bioss
ANTIBODIES

www.bioss.com.cn

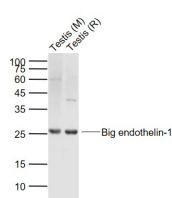
sales@bioss.com.cn

techsupport@bioss.com.cn

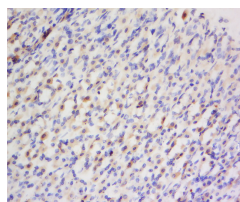
400-901-9800

Big endothelin-1 Rabbit pAb**— DATASHEET —**

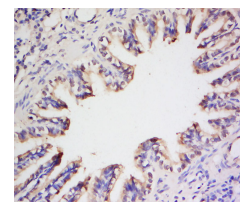
Host: Rabbit	Isotype: IgG	Applications: WB (1:500-2000) IHC-P (1:100-500) IHC-F (1:100-500) IF (1:100-500) Reactivity: Mouse, Rat (predicted: Human) Predicted MW.: 22 kDa Subcellular Location: Secreted
Clonality: Polyclonal		
GeneID: 1906	SWISS: P05305	
Target: Big endothelin-1		
Immunogen: KLH conjugated synthetic peptide derived from human Big endothelin-1: 16-110/212.		
Purification: affinity purified by Protein A		
Concentration: 1mg/ml		
Storage: 0.01M TBS (pH7.4) with 1% BSA, 0.02% Proclin300 and 50% Glycerol. Shipped at 4°C. Store at -20°C for one year. Avoid repeated freeze/thaw cycles.		
Background: Endothelins (ET) show potent constrictor activity in vascular and non-vascular smooth muscle. This family of 21-amino acid peptides exists in at least three isoforms - ET-1, ET-2, and ET-3, and is produced in endothelial and epithelial cells. ET's can mediate biological effects in cells and tissues, and have been shown to bind to an ET receptor in the lung, kidney, heart, and liver. Endothelin 1 is expressed in lung, placental stem villi vessels and in cultured placental vascular smooth muscle cells. Molecular weight: 2491.9 Molecular formula: C ₁₀₉ H ₁₅₉ N ₂₅ O ₃₂ S ₅ CAS: 117399-94-7 MDL: MFCD00133305 Reconstitution: 1mM (1mg/0.4013mL)		

— VALIDATION IMAGES —

Sample: Lane 1: Testis (Mouse) Lysate at 40 ug
 Lane 2: Testis (Rat) Lysate at 40 ug
 Primary: Anti-Big endothelin-1 (bs-0188R) at 1/1000 dilution
 Secondary: IRDye800CW Goat Anti-Rabbit IgG at 1/20000 dilution
 Predicted band size: 24 kD
 Observed band size: 26 kD



Tissue/cell: Rat stomach tissue; 4% Paraformaldehyde-fixed and paraffin-embedded; Antigen retrieval: citrate buffer (0.01M, pH 6.0), Boiling bathing for 15min; Block endogenous peroxidase by 3% Hydrogen peroxide for 30min; Blocking buffer (normal goat serum, C-0005) at 37°C for 20 min; Incubation: Anti-Big endothelin-1 Polyclonal Antibody, Unconjugated(bs-0118R) 1:200, overnight at 4°C, followed by conjugation to the secondary antibody(SP-0023) and DAB(C-0010) staining



Tissue/cell: Rat lung tissue; 4% Paraformaldehyde-fixed and paraffin-embedded; Antigen retrieval: citrate buffer (0.01M, pH 6.0), Boiling bathing for 15min; Block endogenous peroxidase by 3% Hydrogen peroxide for 30min; Blocking buffer (normal goat serum, C-0005) at 37°C for 20 min; Incubation: Anti-Big endothelin-1 Polyclonal Antibody, Unconjugated(bs-0118R) 1:200, overnight at 4°C, followed by conjugation to the secondary antibody(SP-0023) and DAB(C-0010) staining

— SELECTED CITATIONS —

- **[IF=3.164]** Riggs JL et al. Intermittent Hypoxia Exacerbates Increased Blood Pressure in Rats with Chronic Kidney Disease JL Riggs, CE Pace, HH Ward, LV Gonzalez Bosc... - American Journal of ..., 2018Am J Physiol Renal Physiol. 2018 Oct 1;315(4):F927-F941. IHC ;Rat. 29897288