

**bs-21247R****[ Primary Antibody ]****SLC26A8 Rabbit pAb****BioSS**  
**ANTIBODIES**

www.bioss.com.cn

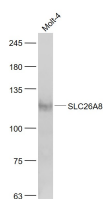
sales@bioss.com.cn

techsupport@bioss.com.cn

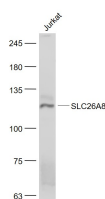
400-901-9800

**— DATASHEET —**

|  |                      |  |
|--|----------------------|--|
| <b>Host:</b> Rabbit  | <b>Isotype:</b> IgG  | <b>Applications:</b> WB (1:500-2000)       |
| <b>Clonality:</b> Polyclonal   |                      | <b>Reactivity:</b> Human                   |
| <b>GeneID:</b> 116369  | <b>SWISS:</b> Q96RN1 |  |
| <b>Target:</b> SLC26A8   |                      |  |
| <b>Immunogen:</b> KLH conjugated synthetic peptide derived from human SLC26A8: 801-900/970. < Cytoplasmic >  |                      | <b>Predicted MW.:</b> 109 kDa              |
| <b>Purification:</b> affinity purified by Protein A  |                      | <b>Subcellular Location:</b> Cell membrane |
| <b>Concentration:</b> 1mg/ml   |                      |  |
| <b>Storage:</b> Preservative: 0.02% Proclin300, Constituents: 1% BSA, 0.01M PBS, pH7.4.<br>Shipped at 4°C. Store at -20°C for one year. Avoid repeated freeze/thaw cycles.   |                      |  |
| <b>Background:</b> This gene encodes a member of the SLC26 gene family of anion transporters. Family members are well conserved in gene structure and protein length yet have markedly different tissue expression patterns. The expression of this gene appears to be restricted to spermatocytes. Alternatively spliced transcript variants that encode different isoforms have been described. [provided by RefSeq, Jul 2010] |                      |  |

**— VALIDATION IMAGES —**

Sample: Molt-4(Human) Cell Lysate at 30 ug  
Primary: Anti- SLC26A8 (bs-21247R) at 1/1000 dilution  
Secondary: IRDye800CW Goat Anti-Rabbit IgG at 1/20000 dilution  
Predicted band size: 109 kD  
Observed band size: 109 kD



Sample: Jurkat(Human) Cell Lysate at 30 ug  
Primary: Anti- SLC26A8 (bs-21247R) at 1/1000 dilution  
Secondary: IRDye800CW Goat Anti-Rabbit IgG at 1/20000 dilution  
Predicted band size: 109 kD  
Observed band size: 109 kD