

bs-1166R**[Primary Antibody]****Bioss**
ANTIBODIES

www.bioss.com.cn

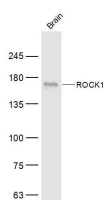
sales@bioss.com.cn

techsupport@bioss.com.cn

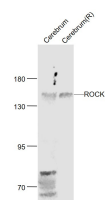
400-901-9800

ROCK1 Rabbit pAb**— DATASHEET —**

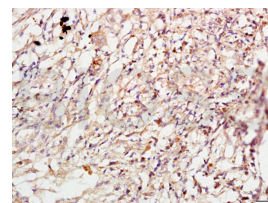
Host: Rabbit	Isotype: IgG	Applications: WB (1:500-2000) IHC-P (1:100-500) IHC-F (1:100-500) IF (1:100-500) Reactivity: Human, Mouse, Rat (predicted: Rabbit) Predicted MW.: 158 kDa Subcellular Location: Cell membrane ,Cytoplasm
Clonality: Polyclonal		
GeneID: 6093	SWISS: Q13464	
Target: ROCK1		
Immunogen: KLH conjugated synthetic peptide derived from human ROCK1: 1001-1200/1354.		
Purification: affinity purified by Protein A		
Concentration: 1mg/ml		
Storage: 0.01M TBS (pH7.4) with 1% BSA, 0.02% Proclin300 and 50% Glycerol. Shipped at 4°C. Store at -20°C for one year. Avoid repeated freeze/thaw cycles.		
Background: This gene encodes a protein serine/threonine kinase that is activated when bound to the GTP-bound form of Rho. The small GTPase Rho regulates formation of focal adhesions and stress fibers of fibroblasts, as well as adhesion and aggregation of platelets and lymphocytes by shuttling between the inactive GDP-bound form and the active GTP-bound form. Rho is also essential in cytokinesis and plays a role in transcriptional activation by serum response factor. This protein, a downstream effector of Rho, phosphorylates and activates LIM kinase, which in turn, phosphorylates cofilin, inhibiting its actin-depolymerizing activity. [provided by RefSeq].		

— VALIDATION IMAGES —

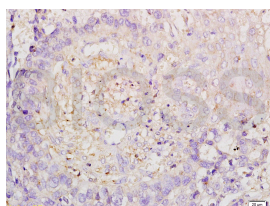
Sample: Brain (Mouse) Lysate at 40 ug Primary: Anti-ROCK1 (bs-1166R) at 1/500 dilution
Secondary: IRDye800CW Goat Anti-Rabbit IgG at 1/20000 dilution Predicted band size: 158 kD
Observed band size: 160 kD



Sample: Cerebrum (Mouse) Lysate at 40 ug Primary: Anti-ROCK1 (bs-1166R) at 1/300 dilution Secondary: IRDye800CW Goat Anti-Rabbit IgG at 1/20000 dilution Predicted band size: 160 kD Observed band size: 160 kD



Tissue/cell: human lung carcinoma; 4% Paraformaldehyde-fixed and paraffin-embedded; Antigen retrieval: citrate buffer (0.01M, pH 6.0), Boiling bathing for 15min; Block endogenous peroxidase by 3% Hydrogen peroxide for 30min; Blocking buffer (normal goat serum, C-0005) at 37°C for 20 min; Incubation: Anti-ROCK1 Polyclonal Antibody, Unconjugated(bs-1166R) 1:200, overnight at 4°C, followed by conjugation to the secondary antibody(SP-0023) and DAB(C-0010) staining



Tissue/cell: Human esophageal carcinoma; 4% Paraformaldehyde-fixed and paraffin-embedded; Antigen retrieval: citrate buffer (

Important Note: This product as supplied is intended for research use only, not for use in human, therapeutic or diagnostic applications.

0.01M, pH 6.0), Boiling bathing for 15min; Block endogenous peroxidase by 3% Hydrogen peroxide for 30min; Blocking buffer (normal goat serum,C-0005) at 37°C for 20 min; Incubation: Anti-ROCK1 Polyclonal Antibody, Unconjugated(bs-1166R) 1:200, overnight at 4°C, followed by conjugation to the secondary antibody(SP-0023) and DAB(C-0010) staining

— SELECTED CITATIONS —

- **[IF=6.831]** Yuan-Jing Zou. et al. RAB14 GTPase is essential for actin-based asymmetric division during mouse oocyte maturation. 2021 Jul 29 IF ;Mouse. 34323331
- **[IF=4.76]** Gong, Tao, et al. "Dynamically tunable polymer microwells for directing mesenchymal stem cells differentiation into osteogenesis." Journal of Materials Chemistry B (2015). WB ;="Rat". doi:10.1039/C5TB01682G
- **[IF=4.15]** Wang, Nan, et al. "Vascular endothelial growth factor stimulates endothelial differentiation from mesenchymal stem cells via Rho/myocardin-related transcription factor-A signaling pathway." The International Journal of Biochemistry & Cell Biology (2013). WB ;="Rat". 23624342
- **[IF=3.923]** Pan T et al. MiR-128-1-5p regulates tight junction induced by selenium deficiency via targeting cell adhesion molecule 1 in broilers vein endothelial cells.J Cell Physiol. 2018 Nov;233(11):8802-8814. WB ;broiler. 29904913
- **[IF=4.014]** Nuo Heng. et al. RhoA improves cryopreservation of rooster sperm through the Rho/RhoA-associated Kinase/cofilin pathway. POULTRY SCIENCE. 2022 Jul;;102051 WB ;Chicken. 35961254