

bs-0025M**[Primary Antibody]****presenilin 1 Mouse pAb****BioSS**
ANTIBODIES

www.bioss.com.cn

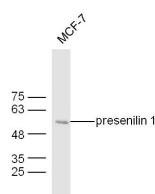
sales@bioss.com.cn

techsupport@bioss.com.cn

400-901-9800

— DATASHEET —

Host: Mouse	Isotype: IgG	Applications: WB (1:500-2000)
Clonality: Polyclonal		Reactivity: Human (predicted: Mouse, Rat, Rabbit, Pig, Cow, Chicken, Dog, Horse)
GeneID: 5663	SWISS: P49768	Predicted MW.: 34/52 kDa
Target: presenilin 1		Subcellular Location: Cytoplasm
Immunogen: KLH conjugated synthetic peptide derived from human Presenilin-1 CTF subunit: 299-350/467.		
Purification: affinity purified by Protein A		
Concentration: 1mg/ml		
Storage: 0.01M TBS (pH7.4) with 1% BSA, 0.02% Proclin300 and 50% Glycerol. Shipped at 4°C. Store at -20°C for one year. Avoid repeated freeze/thaw cycles.		
Background: Alzheimer's disease (AD) patients with an inherited form of the disease carry mutations in the presenilin proteins (PSEN1; PSEN2) or in the amyloid precursor protein (APP). These disease-linked mutations result in increased production of the longer form of amyloid-beta (main component of amyloid deposits found in AD brains). Presenilins are postulated to regulate APP processing through their effects on gamma-secretase, an enzyme that cleaves APP. Also, it is thought that the presenilins are involved in the cleavage of the Notch receptor, such that they either directly regulate gamma-secretase activity or themselves are protease enzymes. Several alternatively spliced transcript variants encoding different isoforms have been identified for this gene, the full-length nature of only some have been determined. [provided by RefSeq, Aug 2008]		

— VALIDATION IMAGES —

Sample: MCF-7 Cell (Human) Lysate at 30 ug
Primary: Anti- presenilin 1 (bs-0025M) at 1/300
dilution Secondary: IRDye800CW Goat Anti-
Mouse IgG at 1/20000 dilution Predicted band
size: 45/50 kD Observed band size: 55 kD