

bs-6011R**[Primary Antibody]****HACE1 Rabbit pAb****BioSS**
ANTIBODIES

www.bioss.com.cn

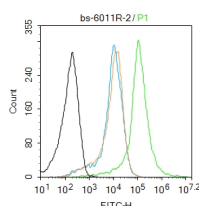
sales@bioss.com.cn

techsupport@bioss.com.cn

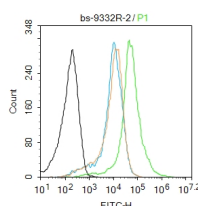
400-901-9800

— DATASHEET —

Host: Rabbit Clonality: Polyclonal GeneID: 57531 Target: HACE1 Immunogen: KLH conjugated synthetic peptide derived from human HACE1: 75-170/909. Purification: affinity purified by Protein A Concentration: 1mg/ml Storage: 0.01M TBS (pH7.4) with 1% BSA, 0.02% Proclin300 and 50% Glycerol. Shipped at 4°C. Store at -20°C for one year. Avoid repeated freeze/thaw cycles. Background: This gene encodes a HECT domain and ankyrin repeat-containing ubiquitin ligase. The encoded protein is involved in specific tagging of target proteins, leading to their subcellular localization or proteasomal degradation. The protein is a potential tumor suppressor and is involved in the pathophysiology of several tumors, including Wilm's tumor. [provided by RefSeq, Mar 2016]	Isotype: IgG SWISS: Q8IYU2	Applications: Flow-Cyt (2ug/Test) Reactivity: Mouse (predicted: Human, Rat, Pig, Cow, Chicken, Dog, Horse) Predicted MW.: 90-102 kDa Subcellular Location: Cytoplasm
---	---	---

— VALIDATION IMAGES —

Blank control: Mouse spleen. Primary Antibody (green line): Rabbit Anti-HACE1 antibody (bs-6011R) Dilution: 2µg/10⁶ cells; Isotype Control Antibody (orange line): Rabbit IgG. Secondary Antibody: Goat anti-rabbit IgG-AF488 Dilution: 1µg/test. Protocol The cells were fixed with 70% ethanol (10min at room temperature) and then were incubated in 5%BSA to block non-specific protein-protein interactions for 30 min at room temperature. Cells stained with Primary Antibody for 30 min at room temperature. The secondary antibody used for 40 min at room temperature. Acquisition of 20,000 events was performed.



Blank control: Mouse spleen. Primary Antibody (green line): Rabbit Anti-NHLRC2 antibody (bs-9332R) Dilution: 2µg/10⁶ cells; Isotype Control Antibody (orange line): Rabbit IgG. Secondary Antibody: Goat anti-rabbit IgG-AF488 Dilution: 1µg/test. Protocol The cells were fixed with 70% ethanol (10min at room temperature) and then were incubated in 5%BSA to block non-specific protein-protein interactions for 30 min at room temperature. Cells stained with Primary Antibody for 30 min at room temperature. The secondary antibody used for 40 min at room temperature. Acquisition of 20,000 events was performed.