

## WIPI2/Atg21 Rabbit pAb

Catalog Number: bs-8767R

Target Protein: WIPI2/Atg21

Concentration: 1mg/ml

Form: Liquid

Host: Rabbit

Clonality: Polyclonal

Isotype: IgG

Applications: **WB** (1:500-2000)

Reactivity: Mouse, Rat (predicted: Human, Pig, Cow, Chicken, Dog, Horse)

Predicted MW: 49 kDa

Subcellular: Cytoplasm

Locations:

Entrez Gene: 26100

Swiss Prot: Q9Y4P8

Source: KLH conjugated synthetic peptide derived from human WIPI2/Atg21: 181-280/454.

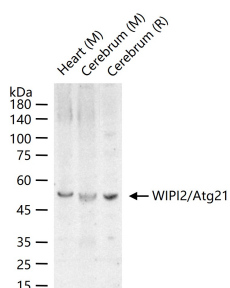
Purification: affinity purified by Protein A

Storage: 0.01M TBS (pH7.4) with 1% BSA, 0.02% Proclin300 and 50% Glycerol.

Shipped at 4°C. Store at -20°C for one year. Avoid repeated freeze/thaw cycles.

**Background:** WD40 repeat proteins are key components of many essential biologic functions. They regulate the assembly of multiprotein complexes by presenting a beta-propeller platform for simultaneous and reversible protein-protein interactions. Members of the WIPI subfamily of WD40 repeat proteins, such as WIPI2, have a 7-bladed propeller structure and contain a conserved motif for interaction with phospholipids (Proikas-Cezanne et al., 2004 [PubMed 15602573]).[supplied by OMIM, Mar 2008]

### VALIDATION IMAGES



25 ug total protein per lane of various lysates (see on figure) probed with WIPI2/Atg21 polyclonal antibody, unconjugated (bs-8767R) at 1:1000 dilution and 4°C overnight incubation. Followed by conjugated secondary antibody incubation at r.t. for 60 min.