

bs-18579R**[Primary Antibody]****LYPLA3 Rabbit pAb****BioSS**
ANTIBODIES

www.bioss.com.cn

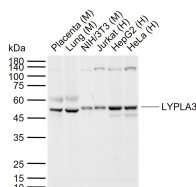
sales@bioss.com.cn

techsupport@bioss.com.cn

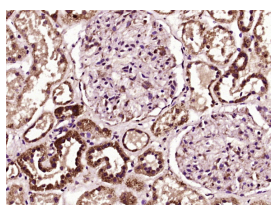
400-901-9800

— DATASHEET —

Host: Rabbit	Isotype: IgG	Applications: WB (1:500-2000)
Clonality: Polyclonal		IHC-P (1:100-500)
GeneID: 23659	SWISS: Q8NCC3	IHC-F (1:100-500)
Target: LYPLA3		IF (1:100-500)
Immunogen: KLH conjugated synthetic peptide derived from human LYPLA3: 101-200/412.		
Purification: affinity purified by Protein A		Reactivity: Human, Mouse (predicted: Rat, Rabbit)
Concentration: 1mg/ml		
Storage: 0.01M TBS (pH7.4) with 1% BSA, 0.02% Proclin300 and 50% Glycerol. Shipped at 4°C. Store at -20°C for one year. Avoid repeated freeze/thaw cycles.		Predicted MW.: 43 kDa
Background: Lysophospholipases are enzymes that act on biological membranes to regulate the multifunctional lysophospholipids. The protein encoded by this gene hydrolyzes lysophosphatidylcholine to glycerophosphorylcholine and a free fatty acid. This enzyme is present in the plasma and thought to be associated with high-density lipoprotein. A later paper contradicts the function of this gene. It demonstrates that this gene encodes a lysosomal enzyme instead of a lysophospholipase and has both calcium-independent phospholipase A2 and transacylase activities. [provided by RefSeq, Jul 2008]		Subcellular Location: Secreted

— VALIDATION IMAGES —

Sample: Lane 1: Mouse Placenta tissue lysates
 Lane 2: Mouse Lung tissue lysates Lane 3: Mouse NIH/3T3 cell lysates Lane 4: Human Jurkat cell lysates Lane 5: Human HepG2 cell lysates Lane 6: Human HeLa cell lysates Primary: Anti-LYPLA3 (bs-18579R) at 1/1000 dilution Secondary: IRDye800CW Goat Anti-Rabbit IgG at 1/20000 dilution Predicted band size: 43 kDa Observed band size: 48 kDa



Paraformaldehyde-fixed, paraffin embedded (human brain glioma); Antigen retrieval by boiling in sodium citrate buffer (pH6.0) for 15min; Block endogenous peroxidase by 3% hydrogen peroxide for 20 minutes; Blocking buffer (normal goat serum) at 37°C for 30min; Antibody incubation with (ZC3HAV1L) Polyclonal Antibody, Unconjugated (bs-18531R) at 1:400 overnight at 4°C, followed by operating according to SP Kit(Rabbit) (sp-0023) instructions and DAB staining.