

bs-20674R**[Primary Antibody]****TGF alpha Rabbit pAb****BioSS**
ANTIBODIES

www.bioss.com.cn

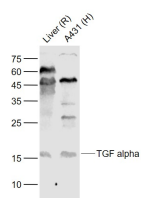
sales@bioss.com.cn

techsupport@bioss.com.cn

400-901-9800

— DATASHEET —

Host: Rabbit	Isotype: IgG	Applications: WB (1:500-2000)
Clonality: Polyclonal		
GeneID: 21802	SWISS: P48030	
Target: TGF alpha		
Immunogen: KLH conjugated synthetic peptide derived from mouse TGF alpha: 39-88/159.		
Purification: affinity purified by Protein A		Reactivity: Human, Rat (predicted: Mouse)
Concentration: 1mg/ml		Subcellular Location: matrix ,Cell membrane
Storage: 0.01M TBS (pH7.4) with 1% BSA, 0.02% Proclin300 and 50% Glycerol. Shipped at 4°C. Store at -20°C for one year. Avoid repeated freeze/thaw cycles.		
Background: This gene encodes a growth factor that is a ligand for the epidermal growth factor receptor, which activates a signaling pathway for cell proliferation, differentiation and development. This protein may act as either a transmembrane-bound ligand or a soluble ligand. This gene has been associated with many types of cancers, and it may also be involved in some cases of cleft lip/palate. Alternatively spliced transcript variants encoding different isoforms have been found for this gene. [provided by RefSeq, Sep 2011].		

— VALIDATION IMAGES —

Sample: Lane 1: Liver (Rat) Lysate at 40 ug Lane

2: A431 (Human) Cell Lysate at 30 ug Primary:

Anti-TGF alpha (bs-20674R) at 1/1000 dilution

Secondary: IRDye800CW Goat Anti-Rabbit IgG at

1/20000 dilution Predicted band size: 15 kD

Observed band size: 16 kD