

**bs-20704R****[ Primary Antibody ]****CREB-1 Rabbit pAb****BioSS**  
**ANTIBODIES**

www.bioss.com.cn

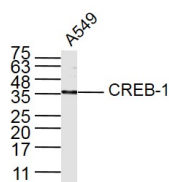
sales@bioss.com.cn

techsupport@bioss.com.cn

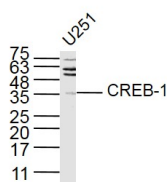
400-901-9800

**— DATASHEET —**

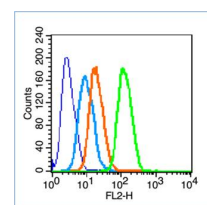
<b>Host:</b> Rabbit	<b>Isotype:</b> IgG	<b>Applications:</b> <b>WB</b> (1:500-2000) <b>Flow-Cyt</b> (1µg/Test)
<b>Clonality:</b> Polyclonal		<b>Reactivity:</b> Human, Mouse, Rat
<b>GeneID:</b> 1385	<b>SWISS:</b> P16220	
<b>Target:</b> CREB-1		
<b>Immunogen:</b> KLH conjugated synthetic peptide derived from human CREB-1: 51-120/341.		
<b>Purification:</b> affinity purified by Protein A		
<b>Concentration:</b> 1mg/ml		<b>Predicted MW.:</b> 37 kDa
<b>Storage:</b> 0.01M TBS (pH7.4) with 1% BSA, 0.02% Proclin300 and 50% Glycerol. Shipped at 4°C. Store at -20°C for one year. Avoid repeated freeze/thaw cycles.		<b>Subcellular Location:</b> Nucleus
<b>Background:</b> The ATF/CREB family consists of transcription factors that function through binding to the cAMP responsive element (CRE) palindromic octanucleotide, TGACCTCA. The best characterized members of this gene family include CREB-1, CREB-2, ATF-1, ATF-2, ATF-3 and ATF-4. these transcription factors share highly-related COOH terminal leucine zipper dimerization and basic DNA bindings but are highly divergent in their amino terminal domains. Although each of the ATF/CREB proteins bind CREs in their homodimeric form, in certain instances they also bind as heterodimers, both within the ATF/CREB family and with members of the AP-1 transcription factor family. It has recently been shown that protein kinase A-mediated CREB phosphorylation results in its binding to a 265kDa nuclear protein designated CBP (CREB-binding protein), which may represent a CREB co-activator.		

**— VALIDATION IMAGES —**

Sample: A549 (Human) Lysate at 30 ug Primary:  
Anti-CREB-1 (bs-20704R) at 1/300 dilution  
Secondary: IRDye800CW Goat Anti-Rabbit IgG at  
1/20000 dilution Predicted band size: 37 kD  
Observed band size: 37 kD



Sample: U251 (Human) Lysate at 30 ug Primary:  
Anti-CREB-1 (bs-20704R) at 1/300 dilution  
Secondary: IRDye800CW Goat Anti-Rabbit IgG at  
1/20000 dilution Predicted band size: 37 kD  
Observed band size: 37 kD



Blank control (blue line): HeLa cells (fixed with 70% methanol (Overnight at 4°C) and then permeabilized with 90% ice-cold methanol for 20 min at -20°C). Primary Antibody (green line): Rabbit Anti-phospho-CREB-1 antibody (bs-20704R), Dilution: 1µg / 10<sup>6</sup> cells; Isotype Control Antibody (orange line): Rabbit IgG . Secondary Antibody (white blue line): Goat anti-rabbit IgG-PE, Dilution: 1µg / test.

**— SELECTED CITATIONS —**

- **[IF=3.173]** Zuo D et al. Alcohol aggravates ketamine-induced behavioral, morphological and neurochemical alterations in adolescent rats: The involvement of CREB-related pathways. Behav Brain Res. 2018 Sep 3;349:80-90. WB ; Rat. 29738804