

bs-20703R**[Primary Antibody]****CREB-1 Rabbit pAb****BioSS**
ANTIBODIES

www.bioss.com.cn

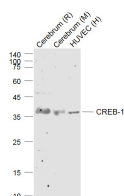
sales@bioss.com.cn

techsupport@bioss.com.cn

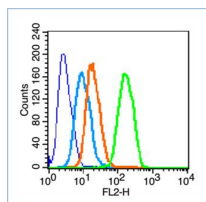
400-901-9800

— DATASHEET —

Host: Rabbit	Isotype: IgG	Applications: WB (1:500-2000) Flow-Cyt (1µg/Test)
Clonality: Polyclonal		
GeneID: 1385	SWISS: P16220	
Target: CREB-1		Reactivity: Human, Mouse, Rat (predicted: Pig, Cow, Chicken, Dog, Horse)
Immunogen: KLH conjugated synthetic peptide derived from human CREB-1: 221-314/341.		
Purification: affinity purified by Protein A		Predicted MW.: 37 kDa
Concentration: 1mg/ml		Subcellular Location: Nucleus
Storage: 0.01M TBS (pH7.4) with 1% BSA, 0.02% Proclin300 and 50% Glycerol. Shipped at 4°C. Store at -20°C for one year. Avoid repeated freeze/thaw cycles.		
Background: The ATF/CREB family consists of transcription factors that function through binding to the cAMP responsive element (CRE) palindromic octanucleotide, TGACCTCA. The best characterized members of this gene family include CREB-1, CREB-2, ATF-1,ATF-2,ATF-3and ATF-4. these transcription factors share highly-related COOH terminal leucine zipper dimerization and basic DNA bindings but are highly divergent in their amino terminal domains. Although each of the ATF/CREB proteins bind CREs in their homodimeric form, in certain instances they also bind as heterodimers, both within the ATF/CREB family and with members of the AP-1 transcription factor family. It has recently been shown that protein kinase A-mediated CREB phosphorylation results in its binding to a 265kDa nuclear protein designated CBP (CREB-binding protein), which may represent a CREB co-activator.		

— VALIDATION IMAGES —

Sample: Lane 1: Cerebrum (Rat) Lysate at 40 ug
 Lane 2: Cerebrum (Mouse) Lysate at 40 ug
 Lane 3: HUVEC (Human) Cell Lysate at 30 ug
 Primary: Anti-CREB-1 (bs-20703R) at 1/1000 dilution
 Secondary: IRDye800CW Goat Anti-Rabbit IgG at 1/20000 dilution
 Predicted band size: 37 kD
 Observed band size: 37 kD



Blank control (blue line): HeLa cells (fixed with 70% methanol (Overnight at 4°C) and then permeabilized with 90% ice-cold methanol for 20 min at -20°C). Primary Antibody (green line): Rabbit Anti-CREB-1 antibody (bs-20703R), Dilution: 1µg /10⁶ cells; Isotype Control Antibody (orange line): Rabbit IgG . Secondary Antibody (white blue line): Goat anti-rabbit IgG-PE, Dilution: 1µg /test.

— SELECTED CITATIONS —

- **[IF=4.6]** Yumei Zheng, et al. Abdominal LIPUS Stimulation Prevents Cognitive Decline in Hind Limb Unloaded Mice by Regulating Gut Microbiota. MOLECULAR NEUROBIOLOGY. 2025 Jan 29. Western blot ; Mouse. 39878866