

**bs-20702R****[ Primary Antibody ]****Desmin Rabbit pAb****Bioss**  
**ANTIBODIES**

www.bioss.com.cn

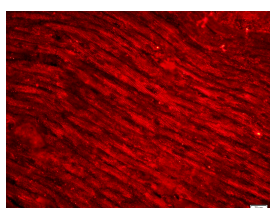
sales@bioss.com.cn

techsupport@bioss.com.cn

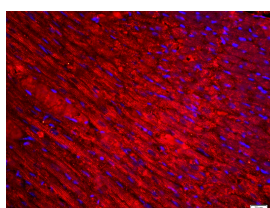
400-901-9800

**— DATASHEET —**

<b>Host:</b> Rabbit	<b>Isotype:</b> IgG	<b>Applications:</b> IHC-P (1:100-500)
<b>Clonality:</b> Polyclonal		<b>IHC-F</b> (1:100-500)
<b>GeneID:</b> 1674	<b>SWISS:</b> P17661	<b>IF</b> (1:100-500)
<b>Target:</b> Desmin		<b>Reactivity:</b> Rat (predicted: Human, Mouse, Rabbit, Pig, Sheep, Cow, Dog, Horse)
<b>Immunogen:</b> KLH conjugated synthetic peptide derived from human Desmin: 311-400/470.		<b>Predicted MW.:</b> 52 kDa
<b>Purification:</b> affinity purified by Protein A		<b>Subcellular Location:</b> Cytoplasm
<b>Concentration:</b> 1mg/ml		
<b>Storage:</b> 0.01M TBS (pH7.4) with 1% BSA, 0.02% Proclin300 and 50% Glycerol. Shipped at 4°C. Store at -20°C for one year. Avoid repeated freeze/thaw cycles.		
<b>Background:</b> Desmin is a muscle-specific, type III intermediate filament that integrates the sarcolemma, Z disk, and nuclear membrane in sarcomeres and regulates sarcomere architecture. In adult striated muscle they form a fibrous network connecting myofibrils to each other and to the plasma membrane from the periphery of the Z line structures. Defects in Desmin are the cause of desmin related cardio skeletal myopathy (CSM) also known as desmin related myopathy (DRM). CSM is characterized by skeletal muscle weakness associated with cardiac conduction blocks, arrhythmias, restrictive heart failure, and by intracytoplasmic accumulation of desmin reactive deposits in cardiac and skeletal muscle cells. A desmin related myopathy can have a distal onset, it is then known as hereditary distal myopathy (HDM). Defects in Desmin are also the cause of dilated cardiomyopathy type 1I (CMD1I). CMD1I is an autosomal form of dilated cardiomyopathy characterized by ventricular dilatation and impaired systolic function. Antidesmin antibodies are useful in identification of tumours of myogenic origin		

**— VALIDATION IMAGES —**

Paraformaldehyde-fixed, paraffin embedded (Rat heart); Antigen retrieval by boiling in sodium citrate buffer (pH6.0) for 15min; Block endogenous peroxidase by 3% hydrogen peroxide for 20 minutes; Blocking buffer (normal goat serum) at 37°C for 30min; Antibody incubation with (Desmin; DES) Polyclonal Antibody, Unconjugated (bs-20702R) at 1:400 overnight at 4°C, followed by a conjugated secondary antibody (bs-0295G-cy3) for 90 minutes.



Paraformaldehyde-fixed, paraffin embedded (Rat heart); Antigen retrieval by boiling in sodium citrate buffer (pH6.0) for 15min; Block endogenous peroxidase by 3% hydrogen peroxide for 20 minutes; Blocking buffer (normal goat serum) at 37°C for 30min; Antibody incubation with (Desmin; DES) Polyclonal Antibody, Unconjugated (bs-20702R) at 1:400 overnight at 4°C, followed by a conjugated secondary antibody (bs-0295G-cy3) for 90 minutes and DAPI for nuclei staining.

**— SELECTED CITATIONS —**

- **[IF=7]** Shengliang Zhang. et al. An efficient serum-free medium for ex vivo expansion of myoblasts from Larimichthys

Important Note: This product as supplied is intended for research use only, not for use in human, therapeutic or diagnostic applications.

crocea for cultured meat production. FOOD RES INT. 2024 Sep;;115073 IF ;Fish. 10.1016/j.foodres.2024.115073

- **[IF=5.959]** Wang Y et al. SPARCL1 promotes C2C12 cell differentiation via BMP7-mediated BMP/TGF- $\beta$  cell signaling pathway. Cell Death Dis. 2019 Nov 7;10(11):852. WB ;Mouse. 31699966
- **[IF=3.759]** Yanjun Duan. et al. MicroRNA-214 Inhibits Chicken Myoblasts Proliferation, Promotes Their Differentiation, and Targets the TRMT61A Gene. Genes-Basel. 2020 Dec;11(12):1400 IF ;Chicken. 33255823
- **[IF=3.231]** Pengfei Shi. et al. Analysis of Promoter Methylation of the Bovine FOXO1 Gene and Its Effect on Proliferation and Differentiation of Myoblasts. ANIMALS. 2023 Jan;13(2):319 IF ;Bovine. 36670858
- **[IF=2.7]** Yanji Zhu. et al. CD73 alleviates podocytes injury in adriamycin-induced nephrotic syndrome. TISSUE CELL. 2025 Apr;93:102647 WB ;Mouse. 39637490