

**bs-6769R****[ Primary Antibody ]****Bioss**  
ANTIBODIES

www.bioss.com.cn

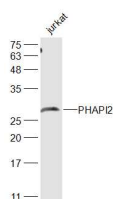
sales@bioss.com.cn

techsupport@bioss.com.cn

400-901-9800

**PHAPI2 Rabbit pAb****— DATASHEET —**

<b>Host:</b> Rabbit	<b>Isotype:</b> IgG	<b>Applications:</b> WB (1:500-2000)
<b>Clonality:</b> Polyclonal		
<b>GeneID:</b> 10541	<b>SWISS:</b> Q92688	
<b>Target:</b> PHAPI2		
<b>Immunogen:</b> KLH conjugated synthetic peptide derived from human PHAPI2/APRIL: 51-150/251.		
<b>Purification:</b> affinity purified by Protein A		
<b>Concentration:</b> 1mg/ml		
<b>Storage:</b> 0.01M TBS (pH7.4) with 1% BSA, 0.02% Proclin300 and 50% Glycerol. Shipped at 4°C. Store at -20°C for one year. Avoid repeated freeze/thaw cycles.		<b>Reactivity:</b> Human, Sheep, Zebrafish, Dog (predicted: Mouse, Rat, Cow, Fruit Fly)
<b>Background:</b> Multifunctional protein working as a cell cycle progression factor as well as a cell survival factor. Required for the progression from the G1 to the S phase. Anti-apoptotic protein which functions as a caspase-3 inhibitor. Has no phosphatase 2A (PP2A) inhibitor activity (By similarity). Exhibits histone chaperone properties, stimulating core histones to assemble into a nucleosome.		<b>Predicted MW.:</b> 29 kDa
		<b>Subcellular Location:</b> Cytoplasm ,Nucleus

**— VALIDATION IMAGES —**

Sample: Jurkat(Human) Cell Lysate at 30 ug  
Primary: Anti-PHAPI2 (bs-6769R) at 1/300  
dilution Secondary: IRDye800CW Goat Anti-  
Rabbit IgG at 1/20000 dilution Predicted band  
size: 29 kD Observed band size: 29 kD