

**bs-7546R****[ Primary Antibody ]****CD239 Rabbit pAb****BioSS**  
**ANTIBODIES**

www.bioss.com.cn

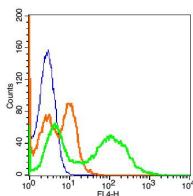
sales@bioss.com.cn

techsupport@bioss.com.cn

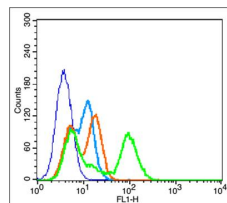
400-901-9800

**— DATASHEET —**

<b>Host:</b> Rabbit <b>Clonality:</b> Polyclonal <b>GeneID:</b> 4059 <b>Target:</b> CD239 <b>Immunogen:</b> KLH conjugated synthetic peptide derived from human CD239: 201-300/623. < Extracellular > <b>Purification:</b> affinity purified by Protein A <b>Concentration:</b> 1mg/ml <b>Storage:</b> 0.01M TBS (pH7.4) with 1% BSA, 0.02% Proclin300 and 50% Glycerol. Shipped at 4°C. Store at -20°C for one year. Avoid repeated freeze/thaw cycles. <b>Background:</b> This gene encodes Lutheran blood group glycoprotein, a member of the immunoglobulin superfamily and a receptor for the extracellular matrix protein, laminin. The protein contains five extracellular immunoglobulin domains, a single transmembrane domain, and a short C-terminal cytoplasmic tail. This protein may play a role in epithelial cell cancer and in vaso-occlusion of red blood cells in sickle cell disease. Polymorphisms in this gene define some of the antigens in the Lutheran system and also the Auberger system. Inactivating variants of this gene result in the recessive Lutheran null phenotype, Lu(a-b-), of the Lutheran blood group. Two transcript variants encoding different isoforms have been found for this gene. [provided by RefSeq, May 2012].	<b>Isotype:</b> IgG <b>SWISS:</b> P50895	<b>Applications:</b> Flow-Cyt (1ug/Test) <b>Reactivity:</b> Human (predicted: Mouse, Rat, Cow, Dog) <b>Predicted MW.:</b> 64 kDa <b>Subcellular Location:</b> Cell membrane
--	---	--

**— VALIDATION IMAGES —**

Blank control(blue): A549 (fixed with 2% paraformaldehyde for 10 min at 37°C). Primary Antibody:Rabbit Anti-CD239/AF647 Conjugated antibody (bs-7546R-AF647,Green); Dilution: 1ug in 100 uL 1X PBS containing 0.5% BSA; Isotype Control Antibody: Rabbit IgG/AF647 (orange) ,used under the same conditions;



Blank control(blue): A549 (fixed with 2% paraformaldehyde for 10 min at 37°C). Primary Antibody:Rabbit Anti-CD239 antibody (bs-7546R,Green); Dilution: 1ug in 100 uL 1X PBS containing 0.5% BSA; Isotype Control Antibody: Rabbit IgG(orange) ,used under the same conditions; Secondary Antibody: Goat anti-rabbit IgG-FITC(white blue), Dilution: 1:200 in 1 X PBS containing 0.5% BSA.