
KCNV2 Rabbit pAb

Catalog Number: bs-16921R

Target Protein: KCNV2

Concentration: 1mg/ml

Form: Liquid

Host: Rabbit

Clonality: Polyclonal

Isotype: IgG

Applications: IHC-P (1:100-500), IHC-F (1:100-500), IF (1:100-500), Flow-Cyt (2µg/Test)

Reactivity: Human, Mouse (predicted:Rat, Rabbit, Pig, Cow, Chicken, Dog, Horse)

Predicted MW: 62 kDa

Entrez Gene: 169522

Swiss Prot: Q8TDN2

Source: KLH conjugated synthetic peptide derived from human KCNV2: 131-230/545.

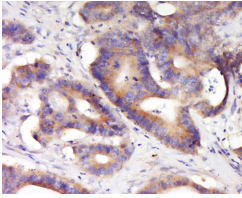
Purification: affinity purified by Protein A

Storage: 0.01M TBS (pH7.4) with 1% BSA, 0.02% Proclin300 and 50% Glycerol.

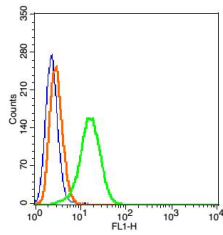
Shipped at 4°C. Store at -20°C for one year. Avoid repeated freeze/thaw cycles.

Background: Voltage-gated potassium (Kv) channels represent the most complex class of voltage-gated ion channels from both functional and structural standpoints. Their diverse functions include regulating neurotransmitter release, heart rate, insulin secretion, neuronal excitability, epithelial electrolyte transport, smooth muscle contraction, and cell volume. This gene encodes a member of the potassium voltage-gated channel subfamily V. This member is identified as a 'silent subunit', and it does not form homomultimers, but forms heteromultimers with several other subfamily members. Through obligatory heteromerization, it exerts a function-altering effect on other potassium channel subunits. This protein is strongly expressed in pancreas and has a weaker expression in several other tissues. [provided by RefSeq, Jul 2008]

VALIDATION IMAGES



Tissue/cell: human colon carcinoma; 4% Paraformaldehyde-fixed and paraffin-embedded; Antigen retrieval: citrate buffer (0.01M, pH 6.0), Boiling bathing for 15min; Block endogenous peroxidase by 3% Hydrogen peroxide for 30min; Blocking buffer (normal goat serum,C-0005) at 37°C for 20 min; Incubation: Anti-KCNV2 Polyclonal Antibody, Unconjugated(bs-16921R) 1:500, overnight at 4°C, followed by conjugation to the secondary antibody(SP-0023) and DAB(C-0010) staining



Blank control(blue): Hepg2 Cells(fixed with 2% paraformaldehyde (10 min)). Primary Antibody: Rabbit Anti-KCNV2/FITC Conjugated antibody (bs-16921R /FITC), Dilution: 3μg in 100 μL 1X PBS containing 0.5% BSA; Isotype Control Antibody: Rabbit IgG/FITC(orange) ,used under the same conditions.