

**bsm-41304M****[ Primary Antibody ]****CD80 Mouse mAb****BioSS**  
**ANTIBODIES**

www.bioss.com.cn

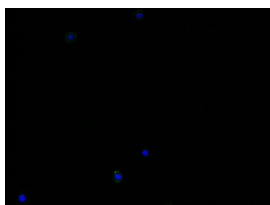
sales@bioss.com.cn

techsupport@bioss.com.cn

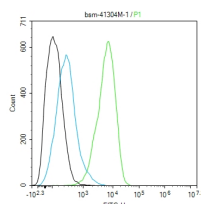
400-901-9800

**— DATASHEET —**

<b>Host:</b> Mouse	<b>Isotype:</b> IgG1	<b>Applications:</b> Flow-Cyt (1ug/Test) <b>ICC/IF</b> (1:50)  <b>Reactivity:</b> Human  <b>Predicted MW.:</b> 32 kDa  <b>Subcellular Location:</b> Cell membrane
<b>Clonality:</b> Monoclonal	<b>CloneNo.:</b> 11B12	
<b>GeneID:</b> 12519	<b>SWISS:</b> Q00609	
<b>Target:</b> CD80		
<b>Immunogen:</b> Recombinant mouse CD80 protein: 38-246/306.		
<b>Purification:</b> affinity purified by Protein A		
<b>Concentration:</b> 1mg/ml		
<b>Storage:</b> Size : 50ul/100ul/200ul 0.01M TBS (pH7.4) with 1% BSA, 0.02% Proclin300 and 50% Glycerol. Size : 200ug (PBS only) 0.01M PBS Shipped at 4°C. Store at -20°C for one year. Avoid repeated freeze/thaw cycles.		
<b>Background:</b> CD80 is a member of the Ig superfamily and serves as the ligand for two T cell molecules, CD28 and CTLA4. Interactions between CD28 and CD80 on activated B cells result in enhanced T cell activation. CD80 is rapidly induced on the surface of in vitro activated B cells, Epstein Barr Virus (EBV) transformed B cell lines, Burkitts lymphoma cell lines, freshly isolated follicular B lymphoma cells, T cells, and monocytes. It is also expressed at high levels in dendritic cells. It reacts weakly with a small proportion of non activated normal B cells and with HTLV1 infected T cells. CD80 does not react with peripheral monocytes, resting and activated normal T cells, T cell lines and T cell clones, nor with myelomonocytic cell lines.		

**— VALIDATION IMAGES —**

Raji cell; 4% Paraformaldehyde-fixed; Triton X-100 at room temperature for 20 min; Blocking buffer (normal goat serum, C-0005) at 37°C for 20 min; Antibody incubation with (CD80) monoclonal Antibody, Unconjugated (bsm-41304M) 1:50, 90 minutes at 37°C; followed by a conjugated Goat Anti-Mouse IgG antibody at 37°C for 90 minutes, DAPI (blue, C02-04002) was used to stain the cell nuclei.



Blank control:Raji. Primary Antibody (green line): Mouse Anti-CD80 antibody (bsm-41304M) Dilution: 1ug/Test; Secondary Antibody (white blue line) : Goat anti-mouse IgG-FITC Dilution: 0.5ug/Test. Isotype control (orange line) : Normal Rabbit IgG Protocol The cells were incubated in 5%BSA to block non-specific protein-protein interactions for 30 min at room temperature .Cells stained with Primary Antibody for 30 min at room temperature. The secondary antibody used for 40 min at room temperature. Acquisition of 20,000 events was performed.