

**bs-18563R**

**[ Primary Antibody ]**

## ZCCHC9 Rabbit pAb

**Bioss**  
ANTIBODIES

www.bioss.com.cn

sales@bioss.com.cn

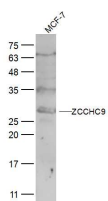
techsupport@bioss.com.cn

400-901-9800

### — DATASHEET —

<b>Host:</b> Rabbit	<b>Isotype:</b> IgG	<b>Applications:</b> WB (1:500-2000)
<b>Clonality:</b> Polyclonal		<b>Reactivity:</b> Human (predicted: Mouse, Rat, Rabbit, Pig, Cow, Dog, Cat, Horse)
<b>GeneID:</b> 84240	<b>SWISS:</b> Q8N567	
<b>Target:</b> ZCCHC9		<b>Predicted MW.:</b> 30 kDa
<b>Immunogen:</b> KLH conjugated synthetic peptide derived from human ZCCHC9: 21-120/271.		<b>Subcellular Location:</b> Cytoplasm
<b>Purification:</b> affinity purified by Protein A		
<b>Concentration:</b> 1mg/ml		
<b>Storage:</b> 0.01M TBS (pH7.4) with 1% BSA, 0.02% Proclin300 and 50% Glycerol. Shipped at 4°C. Store at -20°C for one year. Avoid repeated freeze/thaw cycles.		

### — VALIDATION IMAGES —



Sample: MCF-7(Human) Cell Lysate at 30 ug  
Primary: Anti-ZCCHC9 (bs-18563R) at 1/300  
dilution Secondary: IRDye800CW Goat Anti-  
Rabbit IgG at 1/20000 dilution Predicted band  
size: 30 kD Observed band size: 30 kD