

bs-4442R**[Primary Antibody]****SCRN3 Rabbit pAb****Bioss**
ANTIBODIES

www.bioss.com.cn

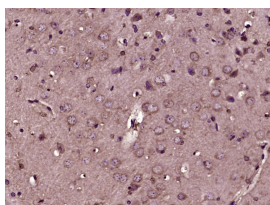
sales@bioss.com.cn

techsupport@bioss.com.cn

400-901-9800

— DATASHEET —

Host: Rabbit	Isotype: IgG	Applications: IHC-P (1:100-500) IHC-F (1:100-500) IF (1:100-500)
Clonality: Polyclonal		
GeneID: 79634	SWISS: Q0VDG4	
Target: SCRIN3		Reactivity: Mouse (predicted: Human, Rat, Pig, Sheep, Cow)
Immunogen: KLH conjugated synthetic peptide derived from human SCRIN3: 151-250/424.		
Purification: affinity purified by Protein A		Predicted MW.: 48 kDa
Concentration: 1mg/ml		Subcellular Location: Cytoplasm ,Nucleus
Storage: Preservative: 0.02% Proclin300, Constituents: 1% BSA, 0.01M PBS, pH7.4. Shipped at 4°C. Store at -20°C for one year. Avoid repeated freeze/thaw cycles.		
Background: SCRIN3 (Secernin 3) is a Protein Coding gene. Gene Ontology (GO) annotations related to this gene include dipeptidase activity. An important paralog of this gene is SCRIN2.		

— VALIDATION IMAGES —

Paraformaldehyde-fixed, paraffin embedded (Mouse brain); Antigen retrieval by boiling in sodium citrate buffer (pH6.0) for 15min; Block endogenous peroxidase by 3% hydrogen peroxide for 20 minutes; Blocking buffer (normal goat serum) at 37°C for 30min; Antibody incubation with (SCRIN3) Polyclonal Antibody, Unconjugated (bs-4442R) at 1:400 overnight at 4°C, followed by operating according to SP Kit(Rabbit) (sp-0023) instructions and DAB staining.