

**bsm-60258M****[ Primary Antibody ]****BioSS**  
ANTIBODIES

www.bioss.com.cn

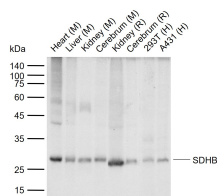
sales@bioss.com.cn

techsupport@bioss.com.cn

400-901-9800

**SDHB Recombinant Mouse mAb****— DATASHEET —**

<b>Host:</b> Mouse	<b>Isotype:</b> IgG2a	<b>Applications:</b> WB (1:500-1000) IHC-P (1:50-100) IHC-F (1:50-100) IF (1:50-100)  <b>Reactivity:</b> Human, Mouse, Rat  <b>Predicted MW.:</b> 32 kDa  <b>Subcellular Location:</b> Cell membrane ,Cytoplasm
<b>Clonality:</b> Recombinant	<b>CloneNo.:</b> G12G2	
<b>Target:</b> SDHB		
<b>Purification:</b> affinity purified by Protein G		
<b>Concentration:</b> 1mg/ml		
<b>Storage:</b> PBS, Glycerol, BSA. Shipped at 4°C. Store at -20°C for one year. Avoid repeated freeze/thaw cycles.		
<b>Background:</b> ron-sulfur protein (IP) subunit of succinate dehydrogenase (SDH) that is involved in complex II of the mitochondrial electron transport chain and is responsible for transferring electrons from succinate to ubiquinone (coenzyme Q).		

**— VALIDATION IMAGES —**

Sample: Lane 1: Mouse Heart tissue lysates Lane 2: Mouse Liver tissue lysates Lane 3: Mouse Kidney tissue lysates Lane 4: Mouse Cerebrum tissue lysates Lane 5: Rat Kidney tissue lysates Lane 6: Rat Cerebrum tissue lysates Lane 7: Human 293T cell lysates Lane 8: Human A431 cell lysates Primary: Anti-SDHB (bsm-60258M) at 1/1000 dilution Secondary: IRDye800CW Goat Anti-Mouse IgG at 1/20000 dilution Predicted band size: 32 kDa Observed band size: 28 kDa

**— SELECTED CITATIONS —**

- **[IF=5.895]** Xixi Wang, et al. Cannabidiol Alleviates Perfluorooctanesulfonic Acid-Induced Cardiomyocyte Apoptosis by Maintaining Mitochondrial Dynamic Balance and Energy Metabolic Homeostasis. J AGR FOOD CHEM. 2023;XXXX(XXX):XXX-xxx WB ;Mouse,Rat. 37010249
- **[IF=4.8]** Lulu Huang, et al. GNAQ R183Q somatic mutation contributes to aberrant arteriovenous specification in Sturge-Weber syndrome through Notch signaling. FASEB J. 2023 Aug;37(9):e23148 IHC,IF ;Human. 37606556