

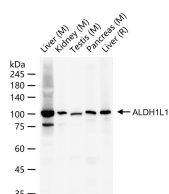
bsm-60542R**[Primary Antibody]****Bioss**
ANTIBODIES

www.bioss.com.cn

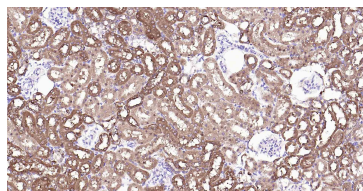
sales@bioss.com.cn

techsupport@bioss.com.cn

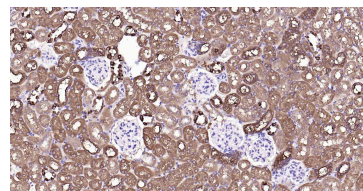
400-901-9800

ALDH1L1 Recombinant Rabbit mAb**— DATASHEET —****Host:** Rabbit**Isotype:** IgG/Kappa**Clonality:** Recombinant**CloneNo.:** G10H7**Target:** ALDH1L1**Immunogen:** A synthesized peptide derived from human ALDH1L1: 180-300.**Purification:** affinity purified by Protein A**Concentration:** 1mg/ml**Storage:** 0.01M TBS (pH7.4) with 1% BSA, 0.02% Proclin300 and 50% Glycerol.
Shipped at 4°C. Store at -20°C for one year. Avoid repeated freeze/thaw cycles.**Background:** The protein encoded by this gene catalyzes the conversion of 10-formyltetrahydrofolate, nicotinamide adenine dinucleotide phosphate (NADP+), and water to tetrahydrofolate, NADPH, and carbon dioxide. The encoded protein belongs to the aldehyde dehydrogenase family. Loss of function or expression of this gene is associated with decreased apoptosis, increased cell motility, and cancer progression. There is an antisense transcript that overlaps on the opposite strand with this gene locus. Alternative splicing results in multiple transcript variants. [provided by RefSeq, Jun 2012]**Applications:** WB (1:500-2000)**IHC-P** (1:50-200)**IHC-F** (1:50-200)**IF** (1:50-200)**ICC/IF** (1:50-200)**Reactivity:** Human, Mouse, Rat**Predicted
MW.:** 100 kDa**Subcellular
Location:** Cytoplasm**— VALIDATION IMAGES —**

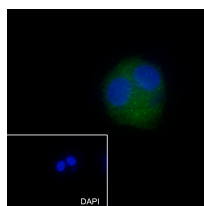
25 ug total protein per lane of various lysates (see on figure) probed with ALDH1L1 monoclonal antibody, unconjugated (bsm-60542R) at 1:1000 dilution and 4°C overnight incubation. Followed by conjugated secondary antibody incubation at r.t. for 60 min.



Paraformaldehyde-fixed, paraffin embedded Rat Kidney; Antigen retrieval by boiling in sodium citrate buffer (pH6.0) for 15 min; Antibody incubation with ALDH1L1 Monoclonal Antibody, Unconjugated(bsm-60542R) at 1:200 overnight at 4°C, followed by conjugation to the SP Kit (Rabbit, SP-0023) and DAB (C-0010) staining.



Paraformaldehyde-fixed, paraffin embedded Mouse Kidney; Antigen retrieval by boiling in sodium citrate buffer (pH6.0) for 15 min; Antibody incubation with ALDH1L1 Monoclonal Antibody, Unconjugated(bsm-60542R) at 1:200 overnight at 4°C, followed by conjugation to the SP Kit (Rabbit, SP-0023) and DAB (C-0010) staining.



Cell line: HepG2 Fixative: 4% Paraformaldehyde
Permeabilization: 0.1% TritonX-100 Primary ab dilution: 1:50 Primary incubation condition: 4°C overnight Secondary ab: Goat Anti-Rabbit IgG
Nuclear counter stain: DAPI (Blue) Comment:

Important Note: This product as supplied is intended for research use only, not for use in human, therapeutic or diagnostic applications.

Color green is the positive signal for bsm-60542R