

IFRD2 Rabbit pAb

Catalog Number: bs-15557R

Target Protein: IFRD2

Concentration: 1mg/ml

Form: Liquid

Host: Rabbit

Clonality: Polyclonal

Isotype: IgG

Applications: WB (1:500-2000)

Reactivity: Mouse (predicted:Human, Rat, Rabbit, Pig, Cow, Horse)

Predicted MW: 55 kDa

Entrez Gene: 7866

Swiss Prot: Q12894

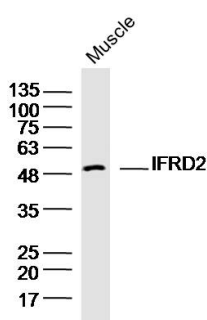
Source: KLH conjugated synthetic peptide derived from human IFRD2 : 101-200/506.

Purification: affinity purified by Protein A

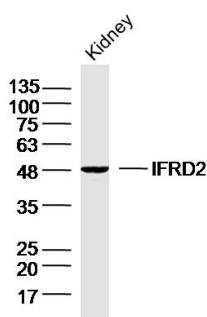
Storage: 0.01M TBS (pH7.4) with 1% BSA, 0.02% Proclin300 and 50% Glycerol.

Shipped at 4°C. Store at -20°C for one year. Avoid repeated freeze/thaw cycles.

VALIDATION IMAGES



Sample: Muscle (Mouse) Lysate at 40 ug Primary: Anti-IFRD2 (bs-15557R) at 1/300 dilution Secondary: IRDye800CW Goat Anti-Rabbit IgG at 1/20000 dilution Predicted band size: 55kD Observed band size: 50kD



Sample: Kidney (Mouse) Lysate at 40 ug Primary: Anti-IFRD2 (bs-15557R) at 1/300 dilution Secondary: IRDye800CW Goat Anti-Rabbit IgG at 1/20000 dilution Predicted band size: 55kD Observed band size: 48kD