

bs-6737R**[Primary Antibody]****SVH Rabbit pAb****Bioss**
ANTIBODIES

www.bioss.com.cn

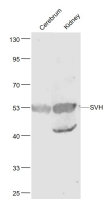
sales@bioss.com.cn

techsupport@bioss.com.cn

400-901-9800

— DATASHEET —

| | | |
|---|----------------------|---|
| Host: Rabbit | Isotype: IgG | Applications: WB (1:500-2000) |
| Clonality: Polyclonal | | Reactivity: Mouse (predicted: Human, Rat, Rabbit, Pig, Cow, Dog) |
| GeneID: 83787 | SWISS: Q8N2F6 | |
| Target: SVH | | Predicted MW.: 38 kDa |
| Immunogen: KLH conjugated synthetic peptide derived from human SVH/ARMC10: 131-240/343. | | Subcellular Location: Cell membrane ,Cytoplasm |
| Purification: affinity purified by Protein A | | |
| Concentration: 1mg/ml | | |
| Storage: 0.01M TBS (pH7.4) with 1% BSA, 0.02% Proclin300 and 50% Glycerol. Shipped at 4°C. Store at -20°C for one year. Avoid repeated freeze/thaw cycles. | | |
| Background: SVH may play a role in cell survival and cell growth and may suppress the transcriptional activity of p53/TP53. Cellular localization Endoplasmic; reticulum membrane; Single-pass membrane protein. | | |

— VALIDATION IMAGES —

Sample: Cerebrum (Mouse) Lysate at 40 ug
Kidney (Mouse) Lysate at 40 ug Primary: Anti-SVH (bs-6737R) at 1/1000 dilution Secondary: IRDye800CW Goat Anti-Rabbit IgG at 1/20000 dilution Predicted band size: 53 kD Observed band size: 53 kD