

bs-6732R**[Primary Antibody]****SDF4 Rabbit pAb****Bioss**
ANTIBODIES

www.bioss.com.cn

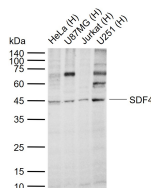
sales@bioss.com.cn

techsupport@bioss.com.cn

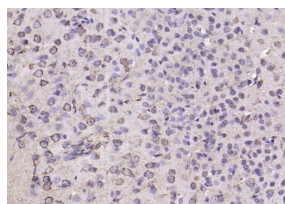
400-901-9800

— DATASHEET —

Host: Rabbit	Isotype: IgG	Applications: WB (1:500-2000) IHC-P (1:100-500) IHC-F (1:100-500) IF (1:100-500)
Clonality: Polyclonal		
GeneID: 51150	SWISS: Q9BRK5	
Target: SDF4		
Immunogen: KLH conjugated synthetic peptide derived from human SDF4: 121-230/362.		Reactivity: Human, Mouse (predicted: Rat, Horse)
Purification: affinity purified by Protein A		
Concentration: 1mg/ml		Predicted MW.: 38 kDa
Storage: 0.01M TBS (pH7.4) with 1% BSA, 0.02% Proclin300 and 50% Glycerol. Shipped at 4°C. Store at -20°C for one year. Avoid repeated freeze/thaw cycles.		Subcellular Location: Extracellular matrix ,Cell membrane ,Cytoplasm
Background: This gene encodes a stromal cell derived factor that is a member of the CREC protein family. The encoded protein contains six EF-hand motifs and calcium-binding motifs. This protein localizes to the Golgi lumen and may be involved in regulating calcium dependent cellular activities. [provided by RefSeq, Sep 2011].		

— VALIDATION IMAGES —

Sample: Lane 1: Human HeLa cell lysates Lane 2: Human U87MG cell lysates Lane 3: Human Jurkat cell lysates Lane 4: Human U251 cell lysates Primary: Anti-SDF4 (bs-6732R) at 1/1000 dilution Secondary: IRDye800CW Goat Anti-Rabbit IgG at 1/20000 dilution Predicted band size: 38 kDa Observed band size: 45 kDa



Paraformaldehyde-fixed, paraffin embedded (mouse brain); Antigen retrieval by boiling in sodium citrate buffer (pH6.0) for 15min; Block endogenous peroxidase by 3% hydrogen peroxide for 20 minutes; Blocking buffer (normal goat serum) at 37°C for 30min; Antibody incubation with (SDF4) Polyclonal Antibody, Unconjugated (bs-6732R) at 1:200 overnight at 4°C, followed by operating according to SP Kit(Rabbit) (sp-0023) instructions and DAB staining.