

**bs-10674R****[ Primary Antibody ]****CD7 Rabbit pAb****Bioss**  
**ANTIBODIES**

www.bioss.com.cn

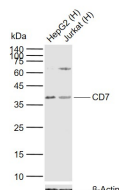
sales@bioss.com.cn

techsupport@bioss.com.cn

400-901-9800

**— DATASHEET —**

|   |                      |  |
|---|----------------------|--|
| <b>Host:</b> Rabbit   | <b>Isotype:</b> IgG  | <b>Applications:</b> WB (1:500-2000)       |
| <b>Clonality:</b> Polyclonal  |                      | <b>Reactivity:</b> Human, Mouse            |
| <b>GeneID:</b> 924  | <b>SWISS:</b> P09564 |  |
| <b>Target:</b> CD7  |                      |  |
| <b>Immunogen:</b> KLH conjugated synthetic peptide derived from human CD7: 31-100/240. < Extracellular >  |                      | <b>Predicted MW.:</b> 24 kDa               |
| <b>Purification:</b> affinity purified by Protein A   |                      | <b>Subcellular Location:</b> Cell membrane |
| <b>Concentration:</b> 1mg/ml  |                      |  |
| <b>Storage:</b> 0.01M TBS (pH7.4) with 1% BSA, 0.02% Proclin300 and 50% Glycerol.<br>Shipped at 4°C. Store at -20°C for one year. Avoid repeated freeze/thaw cycles.  |                      |  |
| <b>Background:</b> This gene encodes a transmembrane protein which is a member of the immunoglobulin superfamily. This protein is found on thymocytes and mature T cells. It plays an essential role in T-cell interactions and also in T-cell/B-cell interaction during early lymphoid development. [provided by RefSeq, Jul 2008] |                      |  |

**— VALIDATION IMAGES —**

Sample: Lane 1: Human HepG2 cell lysates Lane  
2: Human Jurkat cell lysates Primary: Anti- CD7  
(bs-10674R) at 1/1000 dilution Secondary:  
IRDye800CW Goat Anti-Rabbit IgG at 1/20000  
dilution Predicted band size: 24 kDa Observed  
band size: 38 kDa