

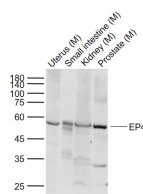
**bs-24918R****[ Primary Antibody ]****EP4 Rabbit pAb****BioSS**  
**ANTIBODIES**

www.bioss.com.cn

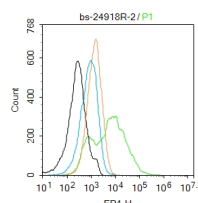
sales@bioss.com.cn

techsupport@bioss.com.cn

400-901-9800

**— DATASHEET —****Host:** Rabbit**Isotype:** IgG**Clonality:** Polyclonal**GeneID:** 19219**SWISS:** P32240**Target:** EP4**Immunogen:** KLH conjugated synthetic peptide derived from mouse EP4 : 1-100/513. < Extracellular >**Purification:** affinity purified by Protein A**Concentration:** 1mg/ml**Storage:** 0.01M TBS (pH7.4) with 1% BSA, 0.02% Proclin300 and 50% Glycerol.  
Shipped at 4°C. Store at -20°C for one year. Avoid repeated freeze/thaw cycles.**Background:** Receptor for prostaglandin E2 (PGE2). The activity of this receptor is mediated by G(s) proteins that stimulate adenylate cyclase. Has a relaxing effect on smooth muscle. May play an important role in regulating renal hemodynamics, intestinal epithelial transport, adrenal aldosterone secretion, and uterine function.**Applications:** WB (1:500-2000)**Flow-Cyt** (2ug/Test)**Reactivity:** Mouse**Predicted MW.:** 53 kDa**Subcellular Location:** Cell membrane**— VALIDATION IMAGES —**

Sample: Lane 1: Mouse Uterus tissue lysates  
 Lane 2: Mouse Small intestine tissue lysates Lane 3: Mouse Kidney tissue lysates Lane 4: Mouse Prostate tissue lysates  
 Primary: Anti-EP4 (bs-24918R) at 1/1000 dilution Secondary: IRDye800CW Goat Anti-Rabbit IgG at 1/20000 dilution  
 Predicted band size: 53 kD Observed band size: 55 kD



Blank control: Ctl1-2. Primary Antibody (green line): Rabbit Anti-EP4 antibody (bs-24918R)  
 Dilution: 2ug/Test; Secondary Antibody : Goat anti-rabbit IgG-FITC Dilution: 0.5ug/Test.  
 Protocol The cells were incubated in 5%BSA to block non-specific protein-protein interactions for 30 min at room temperature .Cells stained with Primary Antibody for 30 min at room temperature. The secondary antibody used for 40 min at room temperature. Acquisition of 20,000 events was performed.