

**bs-1900R****[ Primary Antibody ]****SSTR4 Rabbit pAb****Bioss**  
**ANTIBODIES**

www.bioss.com.cn

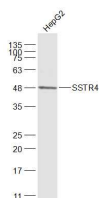
sales@bioss.com.cn

techsupport@bioss.com.cn

400-901-9800

**— DATASHEET —**

<b>Host:</b> Rabbit	<b>Isotype:</b> IgG	<b>Applications:</b> WB (1:500-2000)
<b>Clonality:</b> Polyclonal		<b>Reactivity:</b> Human (predicted: Mouse, Rat, Rabbit, Pig)
<b>GeneID:</b> 6754	<b>SWISS:</b> P31391	
<b>Target:</b> SSTR4		<b>Predicted MW.:</b> 42 kDa
<b>Immunogen:</b> KLH conjugated synthetic peptide derived from human SSTR4: 201-300/388. < Cytoplasmic >		<b>Subcellular Location:</b> Cell membrane
<b>Purification:</b> affinity purified by Protein A		
<b>Concentration:</b> 1mg/ml		
<b>Storage:</b> 0.01M TBS (pH7.4) with 1% BSA, 0.02% Proclin300 and 50% Glycerol. Shipped at 4°C. Store at -20°C for one year. Avoid repeated freeze/thaw cycles.		
<b>Background:</b> Somatostatin acts at many sites to inhibit the release of many hormones and other secretory proteins. The biologic effects of somatostatin are probably mediated by a family of G protein-coupled receptors that are expressed in a tissue-specific manner. SSTR4 is a member of the superfamily of receptors having seven transmembrane segments and is expressed in highest levels in fetal and adult brain and lung. Its function is to inhibit the release of many hormones and other secretory proteins.		

**— VALIDATION IMAGES —**

Sample: HepG2(Human) Cell Lysate at 30 ug  
Primary: Anti-SSTR4 (bs-1900R) at 1/1000  
dilution Secondary: IRDye800CW Goat Anti-  
Rabbit IgG at 1/20000 dilution Predicted band  
size: 42 kD Observed band size: 48 kD