

bs-1048R**[Primary Antibody]**

BioSS
ANTIBODIES

www.bioss.com.cn

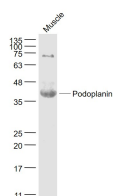
sales@bioss.com.cn

techsupport@bioss.com.cn

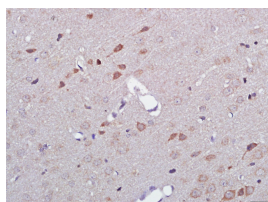
400-901-9800

Podoplanin Rabbit pAb**— DATASHEET —**

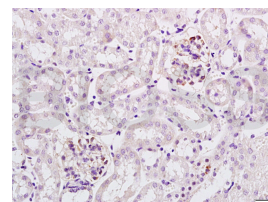
Host: Rabbit Clonality: Polyclonal GeneID: 14726 Target: Podoplanin Immunogen: KLH conjugated synthetic peptide derived from mouse Podoplanin: 91-166/166. Purification: affinity purified by Protein A Concentration: 1mg/ml Storage: 0.01M TBS (pH7.4) with 1% BSA, 0.02% Proclin300 and 50% Glycerol. Shipped at 4°C. Store at -20°C for one year. Avoid repeated freeze/thaw cycles. Background: This gene encodes a type-I integral membrane glycoprotein with diverse distribution in human tissues. The physiological function of this protein may be related to its mucin-type character. The homologous protein in other species has been described as a differentiation antigen and influenza-virus receptor. The specific function of this protein has not been determined but it has been proposed as a marker of lung injury. Alternatively spliced transcript variants encoding different isoforms have been identified. [provided by RefSeq, Jul 2008]	Isotype: IgG SWISS: Q62011	Applications: WB (1:500-2000) IHC-P (1:100-500) IHC-F (1:100-500) IF (1:100-500) Reactivity: Mouse, Rat Predicted MW.: 15 kDa Subcellular Location: Cell membrane ,Cytoplasm
-----------------------------------------------------------------------------------------------------------------------------------------------------------------------------------------------------------------------------------------------------------------------------------------------------------------------------------------------------------------------------------------------------------------------------------------------------------------------------------------------------------------------------------------------------------------------------------------------------------------------------------------------------------------------------------------------------------------------------------------------------------------------------------------------------------------------------------------------------------------------------------------------------------------------------------------------------------------------------------------------------------------------------------------------------------------	---------------------------------------------	--------------------------------------------------------------------------------------------------------------------------------------------------------------------------------------------------------------------------------------------------------

— VALIDATION IMAGES —

Sample: Muscle (Mouse) Lysate at 40 ug Primary: Anti- Podoplanin (bs-1048R) at 1/1000 dilution
 Secondary: IRDye800CW Goat Anti-Rabbit IgG at 1/20000 dilution Predicted band size: 15 kD
 Observed band size: 37 kD



Paraformaldehyde-fixed, paraffin embedded (rat brain tissue); Antigen retrieval by boiling in sodium citrate buffer (pH6.0) for 15min; Block endogenous peroxidase by 3% hydrogen peroxide for 20 minutes; Blocking buffer (normal goat serum) at 37°C for 30min; Antibody incubation with (Podoplanin) Polyclonal Antibody, Unconjugated (bs-1048R) at 1:400 overnight at 4°C, followed by a conjugated secondary (sp-0023) for 20 minutes and DAB staining.



Tissue/cell: mouse kidney tissue; 4% Paraformaldehyde-fixed and paraffin-embedded; Antigen retrieval: citrate buffer (0.01M, pH 6.0), Boiling bathing for 15min; Block endogenous peroxidase by 3% Hydrogen peroxide for 30min; Blocking buffer (normal goat serum, C-0005) at 37°C for 20 min; Incubation: Anti-Podoplanin Protein/gp36 Polyclonal Antibody, Unconjugated(bs-1048R) 1:200, overnight at 4°C, followed by conjugation to the secondary antibody(SP-0023) and DAB(C-0010) staining

— SELECTED CITATIONS —

- **[IF=8.213]** Yiqi Yanget al. Bioprinting of an osteocyte network for biomimetic mineralization. Biofabrication . 2020 Jul 29;12(4):045013. ICC ;mouse. 32610301
- **[IF=5.391]** Choy MV et al. Can we enhance osteoporotic metaphyseal fracture healing through enhancing ultrastructural and functional changes of osteocytes in cortical bone with low-magnitude high-frequency vibration?. FASEB J. 2020 Jan 21. IHC ;Rat. 31961009
- **[IF=4.6]** Hao Juan. et al. Eplerenone reduces lymphangiogenesis in the contralateral kidneys of UUO rats. SCI REP-UK.

Important Note: This product as supplied is intended for research use only, not for use in human, therapeutic or diagnostic applications.

2024 May;14(1):1-11 WB,IHC ;Rat. 38693148

- **[IF=3.622]** Zhu Xiaoying. et al. LRRC superfamily expression in stromal cells predicts the clinical prognosis and platinum resistance of ovarian cancer. BMC MED GENOMICS. 2023 Dec;16(1):1-16 IHC ;Human. 36653841
- **[IF=4.202]** Majumder et al. A practical and sensitive method of quantitating lymphangiogenesis in vivo. (2013) Lab.Inves. 93:779-91 IF ;Mouse. 23711825