

## PMP22 Rabbit pAb

Catalog Number: bs-0235R

Target Protein: PMP22

Concentration: 1mg/ml

Form: Liquid

Host: Rabbit

Clonality: Polyclonal

Isotype: IgG

Applications: WB (1:500-2000)

Reactivity: Mouse, Rat (predicted:Human)

Predicted MW: 22 kDa

Entrez Gene: 5376

Swiss Prot: Q01453

Source: KLH conjugated synthetic peptide derived from human PMP22: 101-160/160.

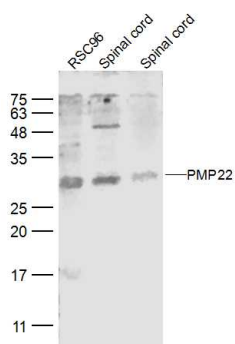
Purification: affinity purified by Protein A

Storage: 0.01M TBS (pH7.4) with 1% BSA, 0.02% Proclin300 and 50% Glycerol.

Shipped at 4°C. Store at -20°C for one year. Avoid repeated freeze/thaw cycles.

**Background:** PMP22 is a 22 kDa glycoprotein expressed in the compact myelin of the peripheral nervous system. In the peripheral nervous system, PMP 22 is produced by myelinating Schwann cells and is coexpressed with the genes for myelin basic protein (MBP) during nerve development and regeneration. Alterations in the level of this protein cause several genetic human diseases. If the protein is duplicated, patients develop Charcot Marie Tooth disease. If one copy of the gene is deleted, they suffer from the inherited tendency to pressure palsies.

### VALIDATION IMAGES



Sample: RSC96 (Mouse) CellLysate at 30 ug Spinal cord (Mouse) Lysate at 40 ug Spinal cord (Rat) Lysate at 40 ug  
Primary: Anti-PMP22 (bs-0235R) at 1/500 dilution Secondary: IRDye800CW Goat Anti-Rabbit IgG at 1/20000 dilution  
Predicted band size: 22 kD Observed band size: 27 kD

## PRODUCT SPECIFIC PUBLICATIONS

---

[IF=0] H Xuan et al. Freestanding Hyaluronic Acid/Silk-based Self-healing Coating towards Tissue Repair with Antibacterial Surface. ACS Appl. Bio Mater., (Web): 28 Jan 2020. WB ; Rat . doi:10.1021/acsabm.9b01196