

bs-0089R**[Primary Antibody]**

Bioss
ANTIBODIES

www.bioss.com.cn

sales@bioss.com.cn

techsupport@bioss.com.cn

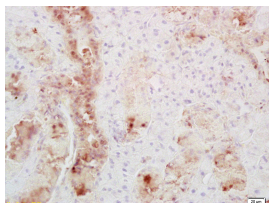
400-901-9800

Secretin receptor Rabbit pAb

— DATASHEET —

Host: Rabbit Clonality: Polyclonal GeneID: 6344 Target: Secretin receptor Immunogen: KLH conjugated synthetic peptide derived from human Secretin receptor: 188-280/440. < Extracellular > Purification: affinity purified by Protein A Concentration: 1mg/ml Storage: 0.01M TBS (pH7.4) with 1% BSA, 0.02% Proclin300 and 50% Glycerol. Shipped at 4°C. Store at -20°C for one year. Avoid repeated freeze/thaw cycles. Background: The receptor for secretin is a class 2 (or class B) G protein coupled receptor that signals through Gs to stimulate cAMP production. Along with its traditional role in the pancreas, studies in secretin-deficient mice have shown miscommunication between the CA3 Schaffer collateral and CA1 pyramidal neurons, causing a deficiency in synaptic transmission. This miscommunication of CA1 dendrites is found in Autism, Rett Syndrome, and most forms of mental retardation, suggesting secretin could be a potential target for treatment of these disorders.	Isotype: IgG SWISS: P47872	Applications: IHC-P (1:100-500) IHC-F (1:100-500) IF (1:100-500) Reactivity: Mouse (predicted: Human, Rat, Rabbit, Sheep, Cow, Dog) Predicted MW.: 46 kDa Subcellular Location: Cell membrane
---	---	--

— VALIDATION IMAGES —



Tissue/cell: mouse thyroid tissue; 4% Paraformaldehyde-fixed and paraffin-embedded; Antigen retrieval: citrate buffer (0.01M, pH 6.0), Boiling bathing for 15min; Block endogenous peroxidase by 3% Hydrogen peroxide for 30min; Blocking buffer (normal goat serum, C-0005) at 37°C for 20 min; Incubation: Anti-Secretin receptor Polyclonal Antibody, Unconjugated(bs-0089R) 1:200, overnight at 4°C, followed by conjugation to the secondary antibody(SP-0023) and DAB(C-0010) staining

— SELECTED CITATIONS —

- **[IF=14.679]** Lixian Chen. et al. Inhibition of secretin/secretin receptor axis ameliorates non - alcoholic fatty liver disease phenotypes. 2021 Apr 30 IHC ;Human, Mouse. 33928675
- **[IF=9.274]** Peder Berg. et al. Impaired Renal HCO₃- Excretion in Cystic Fibrosis. J Am Soc Nephrol. 2020 Aug;31(8):1711-1727 IHC ;Mouse. 32703846
- **[IF=9.071]** Lamei Xue. et al. Maternal secretin ameliorates obesity by promoting white adipose tissue browning in offspring. EMBO REP. 2022 Jul;23(7):e54132 WB ;Human. 35652247

Important Note: This product as supplied is intended for research use only, not for use in human, therapeutic or diagnostic applications.

- **[IF=4.254]** Zhou T et al. Knockout of secretin receptor reduces biliary damage and liver fibrosis in Mdr2^{-/-} mice by diminishing senescence of cholangiocytes. *Lab Invest.* 2018 Nov;98(11):1449-1464 IHC ;Mouse. 29977037