

**bs-0234R****[ Primary Antibody ]****BioSS**  
**ANTIBODIES**

www.bioss.com.cn

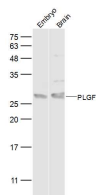
sales@bioss.com.cn

techsupport@bioss.com.cn

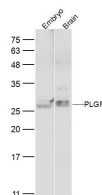
400-901-9800

**PLGF Rabbit pAb****— DATASHEET —**

<b>Host:</b> Rabbit <b>Clonality:</b> Polyclonal <b>GeneID:</b> 18654 <b>Target:</b> PLGF <b>Immunogen:</b> KLH conjugated synthetic peptide derived from mouse PLGF: 131-158/158. <b>Purification:</b> affinity purified by Protein A <b>Concentration:</b> 1mg/ml <b>Storage:</b> 0.01M TBS (pH7.4) with 1% BSA, 0.02% Proclin300 and 50% Glycerol. Shipped at 4°C. Store at -20°C for one year. Avoid repeated freeze/thaw cycles. <b>Background:</b> The placental-derived growth factor (PLGF) is a dimeric glycoprotein showing a high degree of sequence similarity to the vascular endothelial growth factor. Alternative splicing of the PLGF primary transcript gives rise to two forms, named PLGF-1 and PLGF-2, which differ only in the insertion of a highly basic 21-amino acid stretch at the carboxyl end. The presence of the PLGF mRNA in thyroid, placenta, lung, and goiter has indicated the tissues where this factor functions. However, the role of PLGF in vascular development has not yet been clearly established.	<b>Isotype:</b> IgG <b>SWISS:</b> P49764 <b>Applications:</b> WB (1:500-2000)  <b>Reactivity:</b> Human, Mouse  <b>Predicted MW.:</b> 16 kDa  <b>Subcellular Location:</b> Secreted
--	---

**— VALIDATION IMAGES —**

Sample: Embryo (Mouse) Lysate at 40 ug Brain (Mouse) Lysate at 40 ug Primary: Anti-PLGF (bs-0234R) at 1/500 dilution Secondary: IRDye800CW Goat Anti-Rabbit IgG at 1/20000 dilution Predicted band size: 16 kD Observed band size: 27 kD



Sample: Embryo (Mouse) Lysate at 40 ug Brain (Mouse) Lysate at 40 ug Primary: Anti-PLGF (bs-0234R) at 1/2000 dilution Secondary: IRDye800CW Goat Anti-Rabbit IgG at 1/20000 dilution Predicted band size: 16 kD Observed band size: 27 kD